

# **NVR Client System**

## **User's Guide**

## Content

<b>Chapter1 Start up and Main Interface.....</b>	<b>9</b>
1.1 Preparation & Uninstallation .....	9
1.1.1 Preparation .....	9
1.1.2 Uninstallation .....	11
1.1.3 NV Series IPC Scan .....	11
1.2 Start up .....	13
1.3 Main interface.....	13
1.3.1 Show Tips .....	13
1.3.2 Screen Menu.....	14
1.3.3 Interface Description .....	15
1.3.4 System Menu .....	17
1.3.5 Connection Group.....	20
1.3.6 Connection List .....	20
1.3.7 PTZ Control Panel.....	23
1.3.8 Color/Audio Adjustment .....	26
1.3.9 DI/DO Control .....	27
<b>Chapter2 Local Setup .....</b>	<b>29</b>
2.1 System Setup .....	29
2.1.1 System Setup.....	29
2.1.2 Add/Modify Server .....	34

2.2 Group Setup.....	35
2.3 Record Setup .....	37
2.4 Right Setup.....	39
2.4.1 User Setup.....	39
2.4.2 Right Setup.....	40
<b>Chapter3 Local Search .....</b>	<b>41</b>
3.1 Main Interface .....	41
3.2 Partition Mode.....	41
3.3 Playback .....	42
3.3.1 Select Date .....	42
3.3.2 Select Record Type .....	42
3.3.3 Select Camera.....	43
3.3.4 Select File.....	43
3.4 Play File and Related Operations .....	44
3.4.1 Play Files .....	44
3.4.2 Capture Pictures .....	45
3.4.3 Search Captured Pictures .....	45
3.5 Backup.....	47
3.5.1 Create File Clip .....	47
3.5.2 Backup by Time .....	48
3.5.3 View Backup File .....	50

3.5.4 Burn CD .....	50
---------------------	----

## **Chapter4 Remote Setup ..... 52**

4.1 For PC-DVR.....	52
---------------------	----

4.2 For DVS and EM-DVR .....	52
------------------------------	----

4.2.1 Functional Buttons.....	53
-------------------------------	----

4.2.2 Server Setup .....	54
--------------------------	----

4.2.3 Channel Setup .....	55
---------------------------	----

4.2.4 PTZ Control .....	57
-------------------------	----

4.2.5 Sensor Setup.....	60
-------------------------	----

4.2.6 Alarm Setup.....	62
------------------------	----

## **Chapter5 Remote Search ..... 64**

5.1 Steps of Playback .....	64
-----------------------------	----

5.2 Play File and Related Operations .....	67
--	----

5.3 Backup.....	67
-----------------	----

5.3.1 Create File Clip .....	67
------------------------------	----

5.3.2 Backup Record by Time.....	68
----------------------------------	----

5.3.3 View Backup Video File .....	69
------------------------------------	----

5.3.4 Burn Video File to DVD/CD .....	69
---------------------------------------	----

## **Chapter6 IE client..... 70**

6.1 Functions of IE Client .....	70
----------------------------------	----

6.2 Main Interface .....	70
--------------------------	----

6.2.1 Connect Record.....	71
6.2.2 Partition Mode.....	71
6.2.3 PTZ Control.....	72
6.2.4 Local & Remote Search.....	72
6.2.5 Quit Program.....	72
6.3 Local Search.....	72
6.4 Remote Search.....	74
<b>Chapter7 Appendix A: E-Map Function.....</b>	<b>76</b>
7.1 Introduction.....	76
7.1.1 E-Map Introduction.....	76
7.1.2 Corresponding Configuration of E-Map.....	76
7.1.3 Single Monitor.....	76
7.1.4 Dual Monitor.....	79
7.2 Main Interface.....	83
7.3 E-Map Menu.....	83
7.3.1 Map Setup.....	83
7.4 Connect Server while Alarm.....	88
<b>Chapter8 Appendix B: PC Decoder Function.....</b>	<b>89</b>
8.1 Introduction.....	89
8.1.1 PC Decoder Introduction.....	89
8.1.2 Preparation.....	89

8.2 Setup..... 91

8.2.1 Monitor Setup..... 91

8.3 Monitor Contol ..... 97

8.3.1 Monitor Status Display ..... 97

8.3.2 Monitor Control ..... 97

8.4 Operations on TV Client..... 101

8.4.1 Setup..... 101

8.4.2 Monitor Control ..... 101

## Introductions

Thank you for purchasing our NVR client system. This NVR client system can connect PC-DVR (NV DVR system), EM-DVR and DVS. Also, it can set them and search their recording data remotely. In addition, it can view server's log (only for PC-DVR) from long-distance, supporting IE browser connect DVR client.

## New Functions

1. Onvif supported. Refer to Page 35.
2. Search multi-server at a time remotely. Refer to Page 65.
3. MAC OS supported. User can ask our sales to offer this version.
4. View up to 4 channels via iPhone mobileclient.
5. Ipad supported.
6. Webclient updated. Refer to Page 68.

For point 4 & 5, please refer to our iPhone user manual for details.

## System Features

- Support mobile client, such as Andriod, iPhone and Blackberry etc.
- Support the following eight kinds of resolution: 1024\*768 pixels, 1280\*768 pixels, 1280\*1024 pixels, 1366\*768 pixels, 1440\*900 pixels, 1600\*900 pixels, 1680\*1050 pixels and 1920\*1080 pixels.
- Support 64bit OS installation.
- Support PC Decoder function. It is integrated to support multi-monitor for TV wall function. User can drag any board card cameras or IP cameras supported by our software to any window on TV wall. You can connect as many as 24 monitors to the system.
- Support E-Map function. It can be used to deal with variety alarms, such as sensor alarm, motion detection alarm etc. It can switch to display video images of related alarm cameras automatically. User can click them to locate where the alarm be triggered out. And the corresponding names of camera will be displayed on screen.
- Support remote motion setup for PC-DVR
- Support multi-brand of IP cameras, such as Mobotix, Sony, Acti, Arecontvision, Vivotek and SanYo etc.
- Support playing back according to device name
- Support instant playback in 480 sec

- Support write log while alarm. User can search the record video in system log
- Support display the video from alarm server automatically
- Support adjust the window split mode between Normal mode and Wide screen mode
- P/T/Z/F & speed demo control on keyboard
- Network support (Remote access via LAN, Ethernet, PSTN, ISDN, ADSL)

## Important Information

For optimal performance of your system, it is important to follow these recommendations.

We recommend that you divide your hard disk into two partitions (E.g. C and D) at least. The first partition is used to install Windows OS and system software, the other for storing record files. Each partition should not be larger than 2.5TB.

Please use appropriate motherboard and display card. Contact your dealers or our support engineers if you have questions.

## Recommended System Requirements

Chipset: Intel 875PE, 915P, 945P, 965P

Motherboard: Intel: D915/945PCY, D865PERL

Asus: P4P800SE, P5P800 MSI: 865PE Neo2-F, 915/925/945;

Gigabit: GA-865GME, GA-945PL-G etc

Video Card: ATI Rodeon 9250 128MB, ATI Radeon 9550 128MB, ATI X500, X550, X700 etc;

Processor: Intel Pentium 4 2.4GHz or better

Memory: 512MB minimum



## 1.1 Preparation & Uninstallation

### 1.1.1 Preparation

However, you should input correct user name and password to get access to Disk management when manger disables the disk manage right of some operators in [Right setup](#).

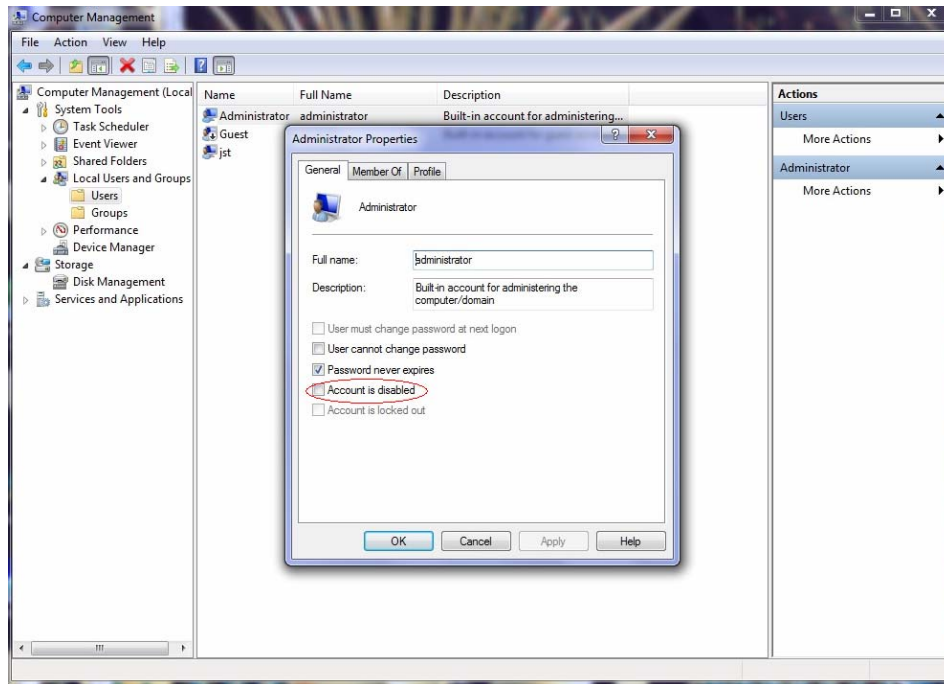
For details, please refer to the particular manual in DVR server manual.  
In order to make NVR client run normally in windows 7 OS, please take

note one of the following things must be done:

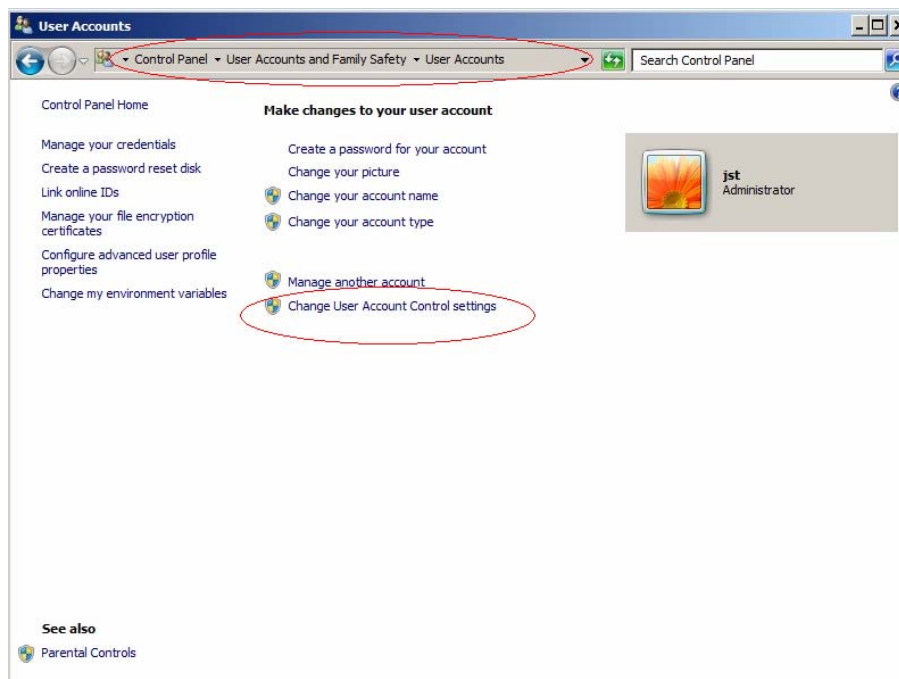
1. Activate "administrator" to do all the operations, such as install software, operate software, etc. The steps to activate are as below:

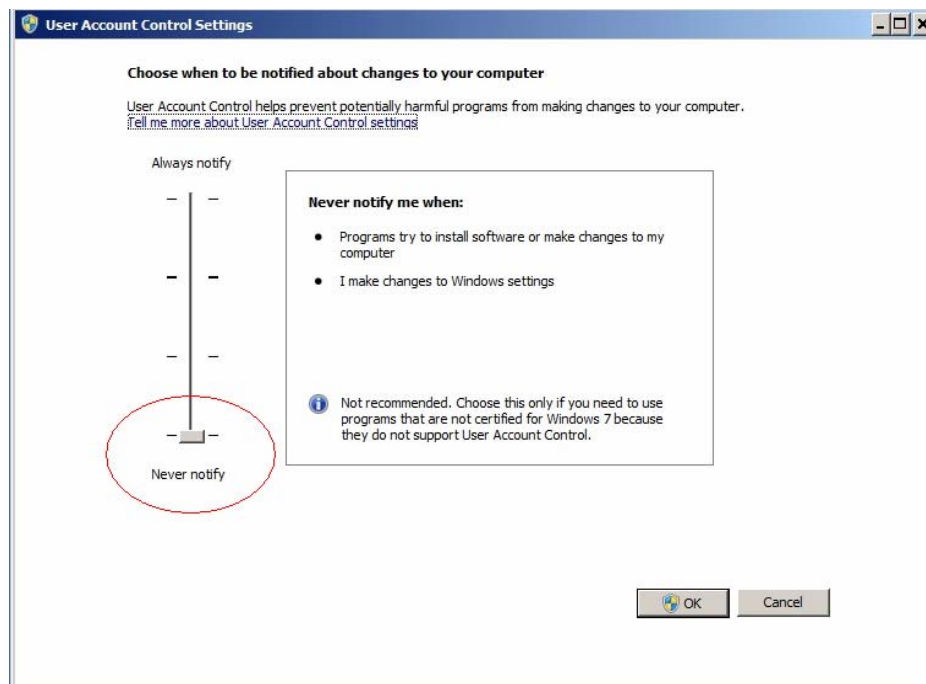
First, single-right-click "Computer" icon->Manage->Local Users and Groups->Users->Administrators->not to check "Account is disabled".

Then, switch user or log off to log in with Administrator.



2. Adjust UAC settings to "Never notify", shown in the below pictures:

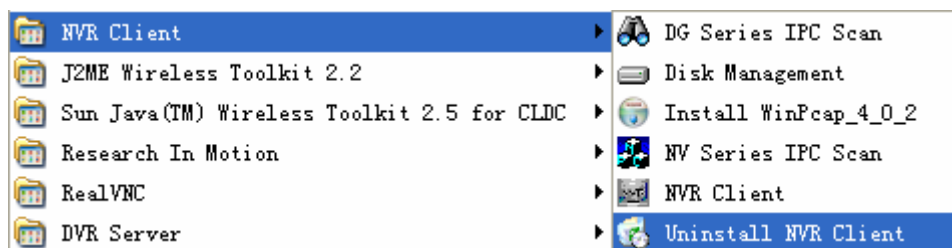




To 64 bit OS, you have to download and install two patches: KB978637 and KB976264. You should download them from MSDNAA manually. They can't be installed automatically when system updates.

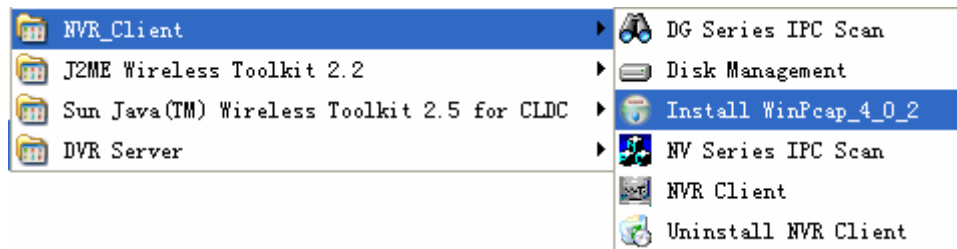
### 1.1.2 Uninstallation

When you want to change this version to another one, you should uninstall it. Click Start→ All programs→ NVR Client→ Uninstall NVR Client to uninstall NVR.

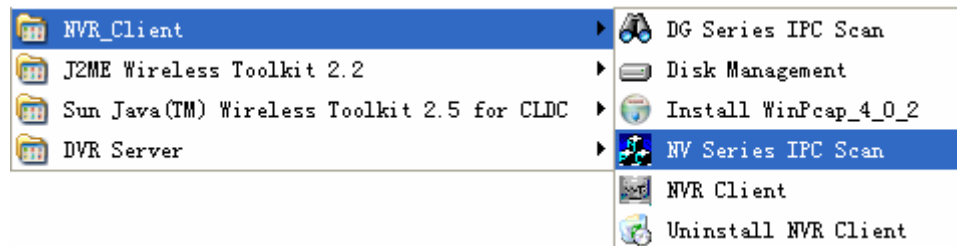


### 1.1.3 NV Series IPC Scan

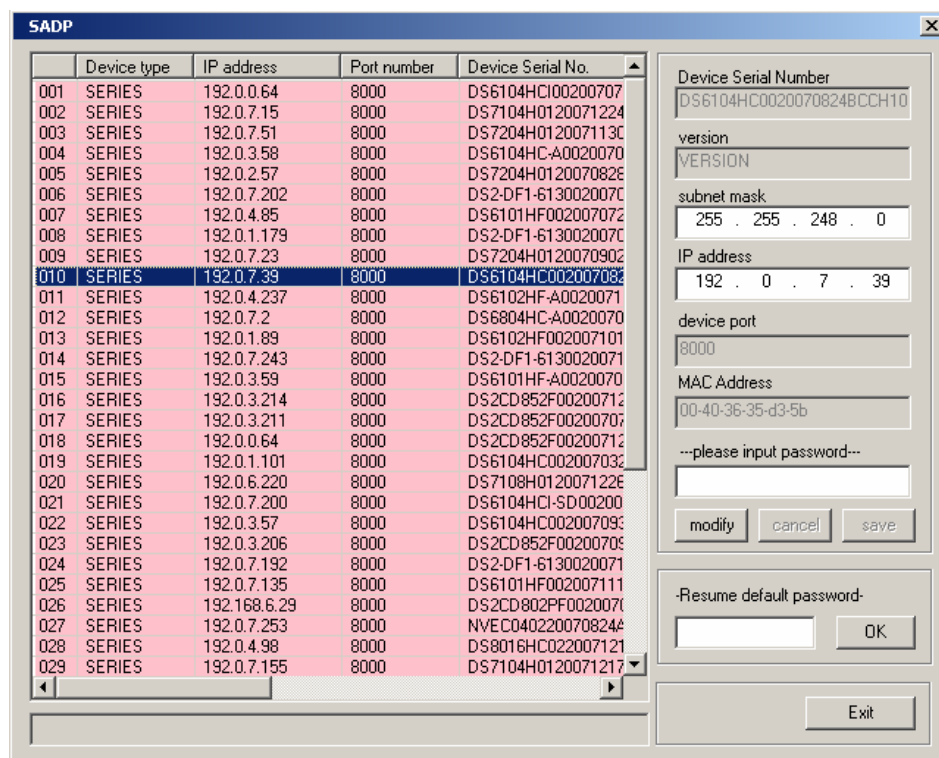
Click Start→ All programs→ NVR\_Client→ Insatll WinPcap\_4\_0\_2 to install the NV series IPC scan tool.



Click Start→ All programs→ NVR\_Client→ NV Series IPC Scan to scan NV series IP cameras connected in the LAN.



Device type, IP address, Port number, Device Serial No., mask, mac, channels, software version, DSP version and start time will be displayed in the search tool. You can modify the IP and port more conveniently when you click “modify” button on the right.



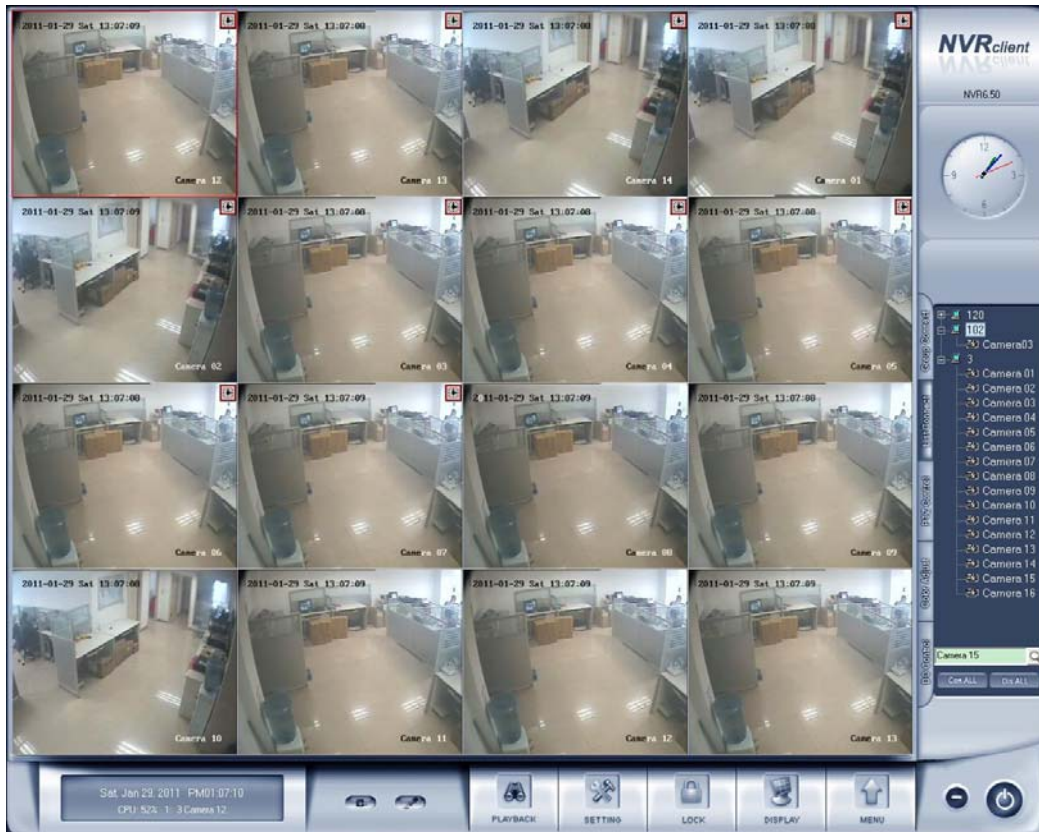
**Note:**

To DG series IPC scan, please refer to **Add DG Series IP Device** for details in DVR user manual.

## 1.2 Start up



After installing NVR Client software, a shortcut icon **NVRClient.exe** will be shown on windows desktop. Double click it to run NVR Client software, the main interface will appear as the follows:



## 1.3 Main interface

### 1.3.1 Show Tips

1. When the mouse moves closely or stops above a button, a text tip will be shown to interpret its function immediately;
2. Zoom in/out video image: Left-Double-Click a camera window to zoom in/out video image;
3. Recording status:



--The system is recording continuously;



-- The system is recording manually;



-- The system is recording in motion detection alarm;

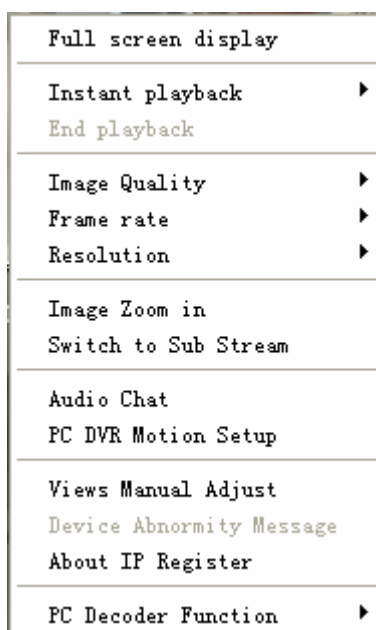


-- The system is recording in event alarm.

### 1.3.2 Screen Menu

Normally, user can press **TAB** key or **Page Down** (select next camera window) and **Page UP** (select previous camera window) key on keyboard to select a window.

Users can Single-Right-Click image area (PC-DVR camera windows and IP camera windows) to popup the screen menu as below:



1. Full screen display: single-right-click to change the display mode to full screen mode, click again to turn back.
2. Instant playback: if you have set "Instant playback max time" in the local setup, then you can use this shortcut function.

**Note:**

In the course of instant playback(for both of the compression card camera and the IP camera), you can press Space key to switch the play/pause status and direction key → or ← to play next or previous frame.

3. End playback: to end playback.
4. Image quality, Frame rate, Resolution: for the sub-stream of PCDVR, you can adjust the Image quality, Frame rate and Resolution. This function is only available to PC-DVR that enabled sub stream in camera setup.
5. IP Video zoom in: zoom in IP video.

6. Switch to sub stream: can be the main / sub-channel switching, if you choose the sub-channel, the images will be poorer.
7. PC DVR Motion setup: Enter the motion setup remotely. It's only available for PC-DVR. For details, you can refer to the DVR user manual.
8. Views Manual/Auto Adjust: if you choose Views Auto Adjust when there is an alarm in E-map, software will adjust it's splits automatically to display the cameras with alarm. Otherwise, it will not change its splits even the alarm cameras are more than the windows.
9. Device abnormality message: When the server is abnormally shut down and restart, there will be a message record. To know the details, you can view the remote log.
10. About IP register: Click this function, the registered and unregistered device information will be displayed.
11. PC Decoder Function: Please refer to PC Decoder Manual for details.


**Note:**

Show prompt: When the mouse moves closely or stops over a button, the button function text prompt will be shown immediately.

### 1.3.3 Interface Description


#### 1. Partition Mode



Press  button to set display mode. There are many types of the partition, including 1,4,6,9,13,16,20,25,28,33,36,40,49,64 partition. Select the suitable partition according to your need.


#### 2. Image Capture



Press  button to save a still image of a selected camera in live view that is selected by user onto hard disk, and then review and print the image.

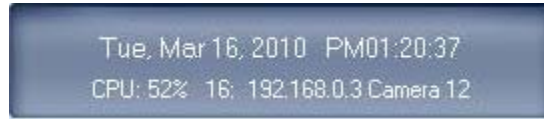
#### 3. Manual Record Switch



Press  button to record manually to any camera, after manual recording, must stop manually.




## 4. Information Panel




Date, time and display window information panel Information: Show day of the week, current date, current time, and the percentage of CPU usage, the current selected window, and the current linkage in this window.

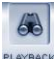
## 5. System Lock

After you enabled “use password” in [Right Setup](#), press  button to lock system-Lock keyboard and mouse to prevent unauthorized user to operate NVR Client system. Left-Single-Click this button to acquire the operation rights by entering the user and password, default user ID is “admin”, no password.

## 6. Setting

Press  button to enter [Local Setup](#) submenu. In this menu, you can set system and related parameters.

## 7. Playback

Click  button in main interface to enter [Remote Playback](#) interface.

## 8. Minimize Button

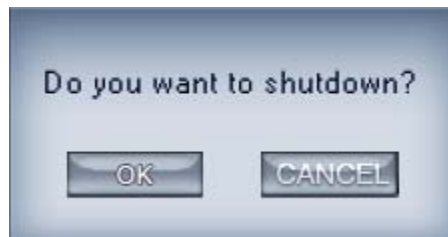
Press  button to minimize the main window.

## 9. Exit Program

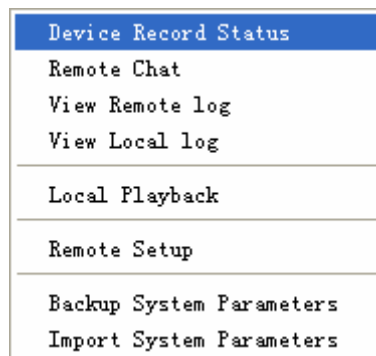
Press  button to exit program.

After clicking this button, a dialog will be displayed. Click “OK” to quit NVR system.





### 1.3.4 System Menu



## 1. Device Record Status

Select this item to view the record status of PC-DVR.

Please note this function is only available to PC-DVR and the PC-DVR should be the same version of your NVR. Otherwise, you will get an error says "The IP device doesn't support this function".

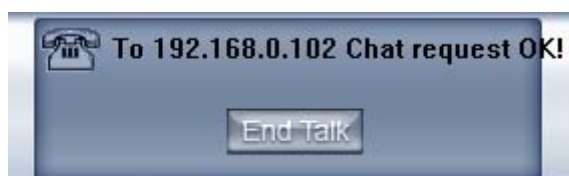
Disk Record Status					
Disk Drive	Disk Usage	Record Status	Record Start Time	Record End Time	Disk Defect
Drive: E	%100	Recorded	2010-10-08 12:09:22	2010-10-08 12:53:32	Normal
Drive: H	%100	Recorded	2010-10-05 20:02:52	2010-10-06 16:55:13	Normal
Drive: I	%100	Recording	2010-10-08 16:56:41	2010-10-12 14:43:43	Normal

## 2. Remote Chat

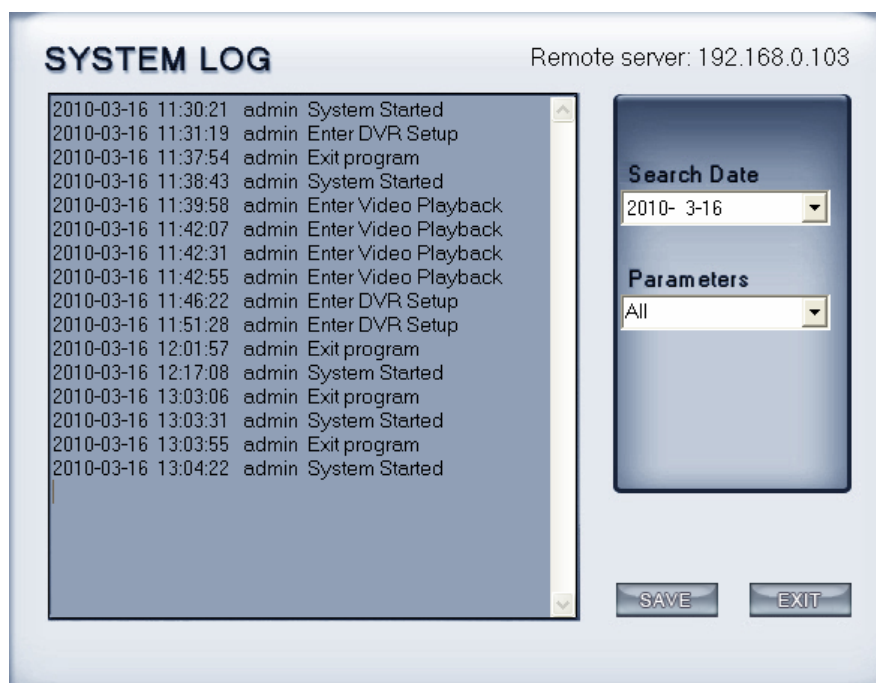
Press Remote Chat to make a voice chatting. Click it to have remote chat with the connected server. Sound card with mice input must be used. If there is no sound card on either side, the chat will not be carried on.




Select a server from drop-down list to make a remote chat. If connect successfully, there will be an icon tip to show it.



### 3. View Remote Log



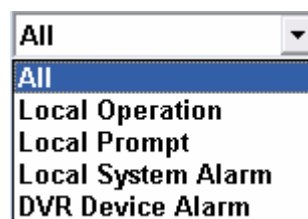
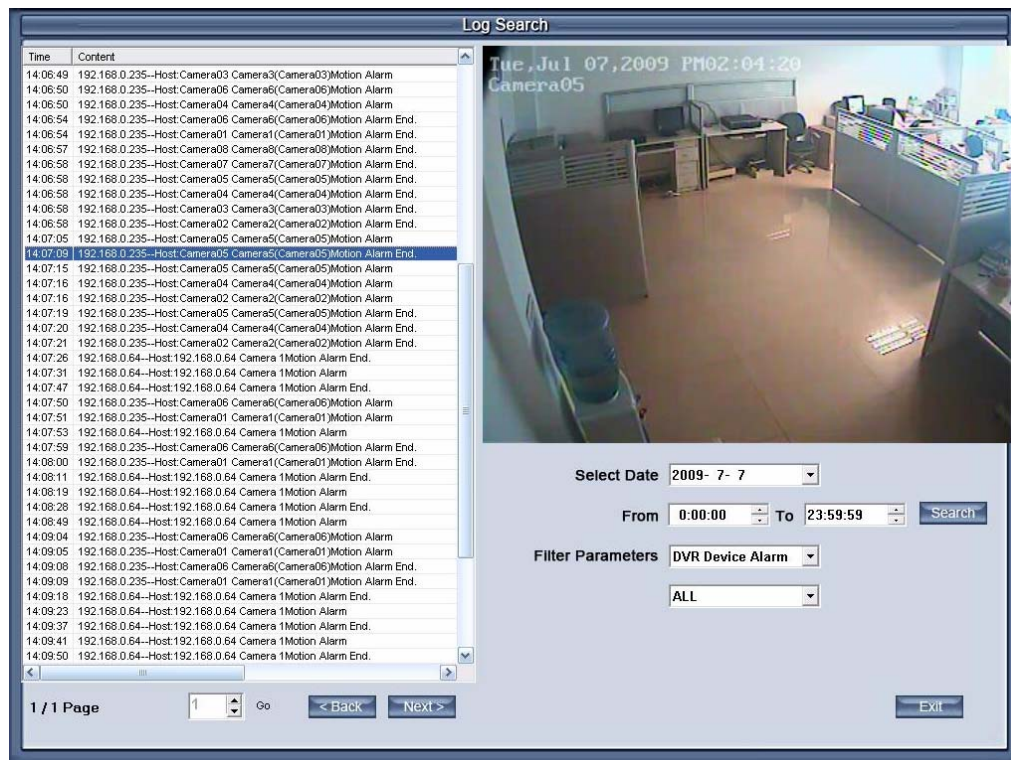
Press  button to search log from a long distance server that you are being connected. It's good that no one is on duty in server end. You can see

information of the server and you needn't get to the server site.

**Note:**

Remote log is only available to PC-DVR.

## 4. View Local Log



Local system log keeps a record of system events such as local operation, local prompt, local system alarm and DVR device alarm according to time and date. Users can search log by date, time and system parameters.

When there is a motion alarm triggered out, user can view its record on the right top of this interface. But you should confirm you have enabled “write log while alarm” in [Local System Setup](#) first. Besides, if the motion alarm lasts only for a short time, there may be no picture record in system log.

## 5. Local Playback

Select **Local Playback** to enter [Local Playback](#) submenu.

## 6. Remote Setup

Select Remote Setup to enter [Remote Setup](#) submenu. In this menu, you can set the server's parameters remotely.


## 7. Backup System Parameters



Backup the system parameters to the select path.



## 8. Import System Parameters

Import system parameters form the save path.

### 1.3.5 Connection Group


Press  to enter connection group setup. This panel displays the information of groups and cameras.

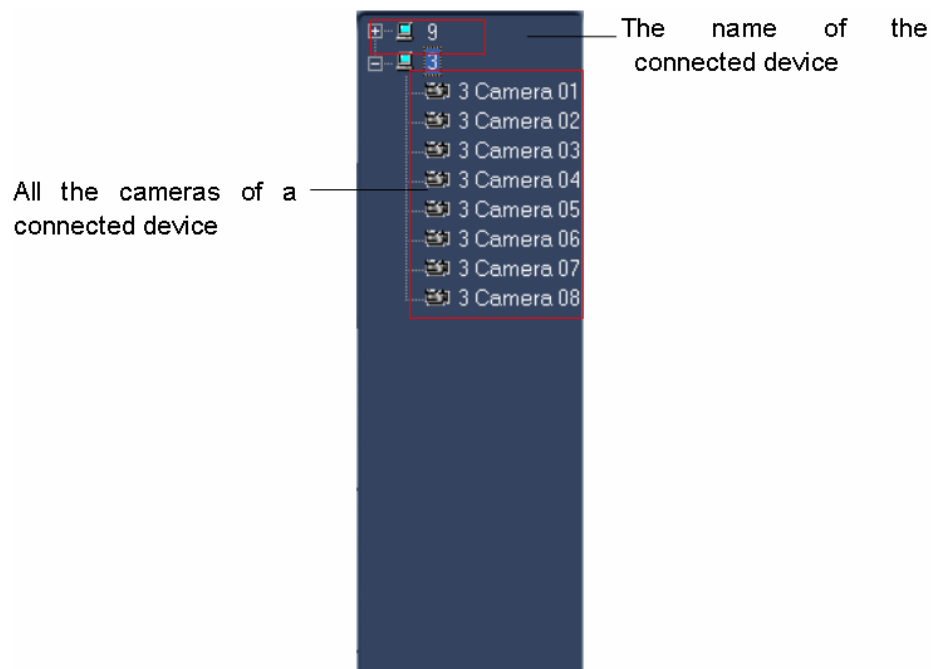
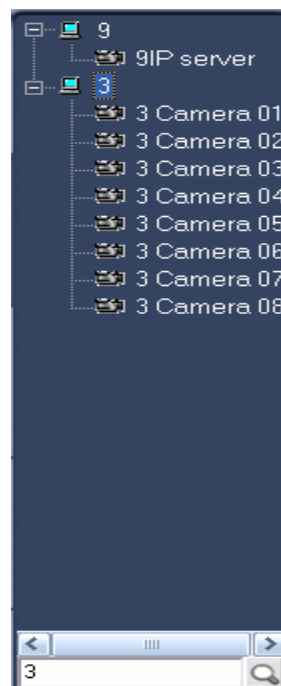
There are 18 preset groups and you can choose any one group to connect. There are 64 windows and you can also click  to connect all of them and click  to disconnect all. The shade of icon will show the status of window:

-  Window 1 disconnects
-  Window 2 connects

### 1.3.6 Connection List

#### 1. List

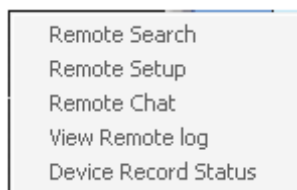
Press  button to show all the equipments you have added in this client.



Double click one camera and it will be connected in a selected window.

## 2. Quick Operations

There will be a menu shown as below if you Single-Right-Click on the sever name.



### (1). Remote Search

Please refer to Chapter 5 for details.

### (2). Remote Setup

Please refer to Chapter 4 for details.

### (3). Remote Chat

Please refer to Page 11 for details.


### (4). View Remote Log

Please refer to Page 16 for details

### (5). Device Record Status

Select this item to view the record status of PC-DVR.

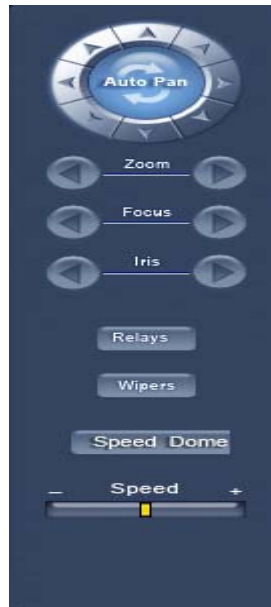
Please note this function is only available to PC-DVR and the PC-DVR should be the same version of your NVR. Otherwise, you will get an error says "The IP device doesn't support this function".



Disk Drive	Disk Usage	Record Status	Record Start Time	Record End Time	Disk Defect
Drive: E	%100	Recorded	2010-10-08 12:09:22	2010-10-08 12:53:32	Normal
Drive: H	%100	Recorded	2010-10-05 20:02:52	2010-10-06 16:55:13	Normal
Drive: I	%100	Recording	2010-10-08 16:56:41	2010-10-12 14:43:43	Normal

### 1.3.7 PTZ Control Panel

Press  button to control PTZ.



#### 1. PTZ Speed Setup

Press and drag the slider bar to adjust the speed of PTZ.

#### 2. Relay (On/Off)

Control the PTZ cameras internal relay (relay1) or the decoder's relay (relay 1). Used to turn on a light or control an access gate.

#### 3. Wiper (On/Off)

If using the PTZ cameras corresponding wiper control relay, this toggles the relay/wiper on and off.

#### 4. Zoom + / Zoom –

Control the zoom function of the PTZ camera.

#### 5. Focus + / Focus –

Overrides the auto-focus setting of the PTZ camera, adjust focus the image.

#### 6. Iris + / Iris –

Overrides the PTZ cameras auto-iris and brighten or darken the image.



Pressing this button initiates the connected PTZ camera to do an automatic tour of 360°.

By pressing and holding these buttons, the PTZ camera is moved up, down, right and left as well as other directions.

## 7. Preset Call

Press **Speed Dome** button to operate the speed dome. Only Preset Call is available. And you should set the preset remotely first.



### (1). Preset Setup

In this screen you can set the preset position:

192.168.0.102 camera 01

Add/Del. Preset

Preset Name

Preset No.

Call Mode

+ - SET

Preset Name	NO.
a	1
b	2
cd	3

No PTZ action  sec back

Home Position

Tour Preset

Preset Name

+ - Stay Time  sec

Preset Name	NO.	Time
a	1	5
b	2	5
cd	3	6

SAVE EXIT



## I. Add/Delete Preset

In this section you can set the preset name with its sequence number. Then you can press **+/ -** button to add/delete a preset. When you want to modify the preset, you can press **SET** button to confirm your modification. For different cameras, they have different commands to open and set, so you can choose the call mode in the drop-down list for different cameras.

## II. Home Position

You can set a home position for the PTZ. When there are no PTZ actions after the setting time system will call the PTZ to the home position.

## III. Tour Preset

In this section you can set the tour schedule. First you can choose a group, and then set the track for this schedule; you can press **+/ -** button to add/delete a preset to it. After you choose the preset name you can set the time to keep on.

### (2). Preset Call

When you select this function, system will show all the preset names you set in Preset Setup menu; you can click one to move to it.

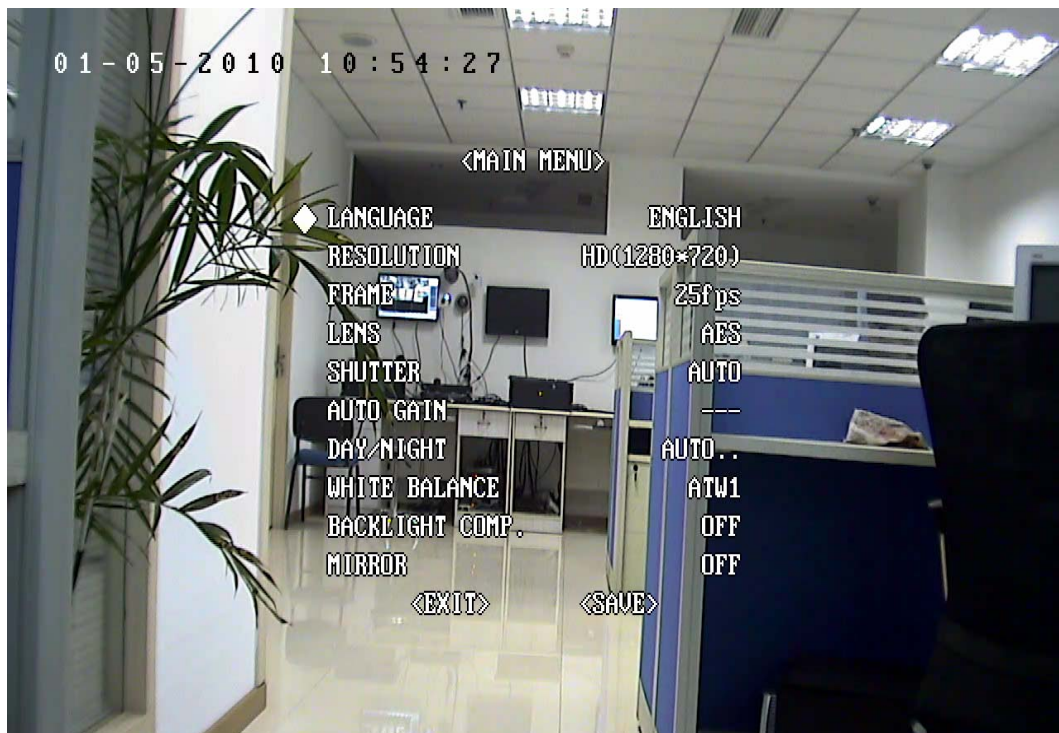
### (3). Preset Tour




When you select this function, system will show the entire tour groups you set in Preset Setup menu; you can click one to execute it.

**Note:**

In the NVR system, clicking the tour groups again can not stop the preset tour (this is different from DVR server). You can stop the PTZ camera by click up, down, left, right or click the "preset call".

If the views are NV series PTZ&IP camera and mega pixel IP camera, when you call preset 95, you can see:



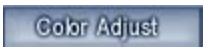
When you enter the menu, you can control it by using up, down, left and right buttons. Press  Iris  IRIS – () to enter the sub menu. When you use up or down to move to “exit”, press IRIS- to exit the menu.

For details, please refer to Chapter 4 in Network\_Camera\_Menu for details.


## 8. Control PTZ via Video Window


Press and drag the mouse to the corresponding area to control the PTZ when there is a decoder.


### 1.3.8 Color/Audio Adjustment


Press  button to enter Color/Audio Adjust Panel-Slider adjustments for the video image and recording volume of the selected tile. This also affects the live view of the video images.



① Press the first button and drag to adjust the brightness of the image that you selected, and you can resume its default value by pressing .

② Press the second button and drag it to adjust the contrast of the image that you selected and you can resume its default value by pressing .

③ Press the third button and drag it to adjust the hue of the image that you selected, and you can resume its default value by pressing .

④ Press the fourth button and drag it to adjust the saturation of the image that you selected, and you can resume its default value by pressing .

⑤ Press the fifth button to switch sound of the audio that related to the image you selected and drag the slider bar to adjust the volume.

### 1.3.9 DI /DO Control

**Note:**

The channel of DI and DO is determined by the connected server.

## 1. DI Control

The DI number will show the alarm status of the corresponding server indicated by the shades of the icon:

**2** Input channel 2 doesn't check sensor forcibly.

**3** Input channel 3 checks sensor forcibly or has an alarm inputting.

When there is no alarm yet, user can press number button to check sensor forcibly. Press the button again to stop checking all time, then system checks sensor according to Sensor setup. When there is an alarm, the corresponding button will show the alarm with blue.

## 2. DO Control

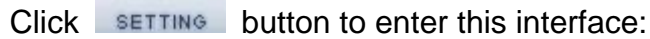
Press number to open/close alarm device relay switch manually. There are two types of status to DO:

**2** Output channel 2 is close.

**3** Output channel 3 is open.

When there is no alarm triggered out, user can press the number button to output alarm forcibly and the button will show it with green, press it again the output will be closed.

## 2.1 System Setup



**【Import】**  
Select this function to export system configurations.

**【Export】**  
Select this function to import system configurations.

**【Max. Record channels】** Set the max record channels, the max number is 64, if set the number as 20(shown as below):



Restart NVR Client software to make it efficiently.

**【Web Listen port】** The IE client connect port. Restart NVR Client software to make it efficiently.

**【Use electronic map】** Select be disable or enable to use the electronic map. At the same time, you should choose the mode from stretched and extended. Please refer to [E-map manual](#) for details.

**【Connect server while alarm】** Enable: If there is an alarm in DVR server end, the client will connect the DVR server forwardly.

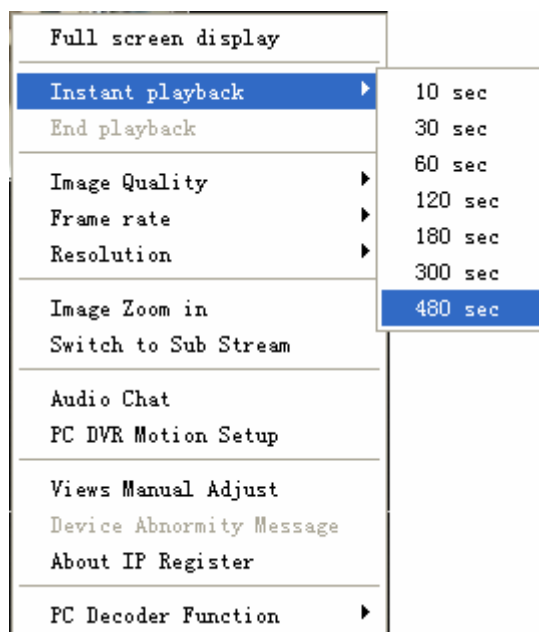
**【Data stream Auto adjust】** 1,1-4,1-6,1-9,1-13,1-16View->Main Stream, when you select one, all the view less than you select should be main stream.

**【Write log while alarm】** Select whether system writes alarm information log or not. There will be alarm information and corresponding record in [local system log](#) when you select enable.

**【Default Connect Stream Type】** Select the stream type as default.

**【Auto Reconnect Time Interval】** If you select the “Auto Reconnect Time Interval” function, when the software is disconnected, the software will reconnect auto by the setting time.

**【Instant playback max time】** Set the instant playback max time or disable the function. If you select “480sec” then you can use “Instant playback” in the main interface as bellow:



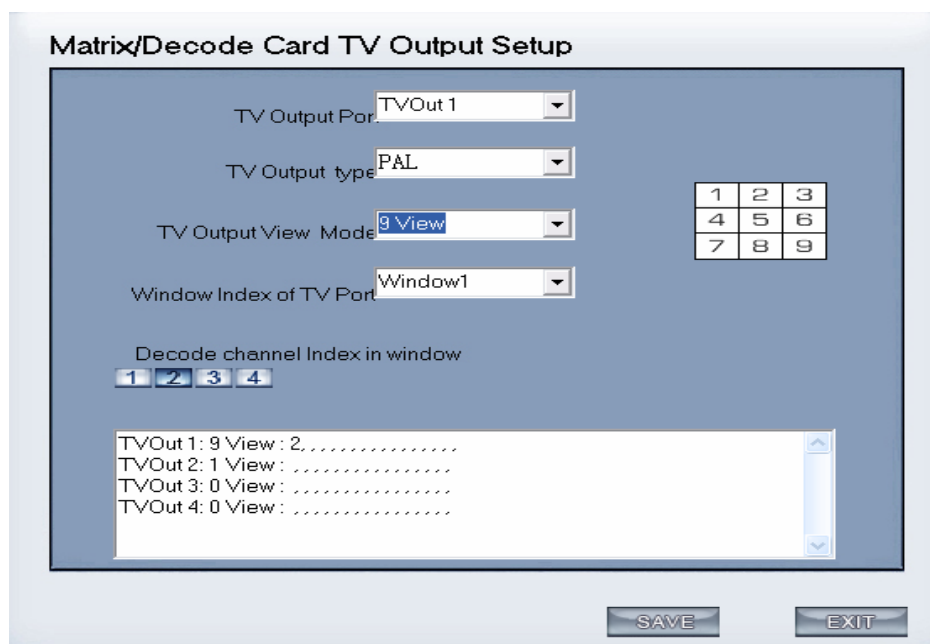
**【Matrix card work mode】** If use matrix and decode card, select work mode from D1 decode mode or CIF decode mode and set it.

**Note:**

Each NV4002MD card can decode 2 channels D1 or 4channels CIF.

Each NV4004MD card can decode 4 channels D1 or 8 channels CIF.

Decoder will send out corresponding number channels from the first window in sequence.



User can set each output port individually.

**【TV output port】** Select decoder card output port.

**【TV output View Mode】** Set the split mode for selected port.

**【Window index of TV port】** Select the index for each split window.

*For example:*



This icon has four windows: window1, window2, window3, window4.

**【Decode channel Index in window】**



Select window index for the selected window. Each window can only select one decode channel. The number of decode channel will be showed automatically according to the channels of the decode card. For example, if there is one NV4004MD card, there will show the 8 decode channel, if there are two NV4004MD cards, there will show the 16 decode channel, if one 4002MD card, there are 4 decode channel only.





This figure as above shows the decode channel have been selected, in order that user can't select the decoder repeatedly.

**Note:**

If use "CIF decode mode", and there isn't preview video appear in the NVR client main interface. The reason for this is that the resolution setup too high in DVR Server end. For example: D1. (Please restart NVR Client software after this item setup).

**【Software Start Auto Connect】** Select the group set in [Group Setup](#) to be connected when the program start. When you select "Disable", Client will not connect the camera automatically.

**【Auto Reconnect time interval】** Select whether the client reconnect when the connection is interrupted and the time interval. If you select "Disable", when the connection is interrupted, program will not reconnect it.

If you select the "Auto Reconnect Time Interval" function, when the software is disconnected, the software will reconnect automatically after the setting time.

**【Keyboard use COM port】** Select a COM port for keyboard to connect. Please refer to *Keyboard Manual* for details.

**【Grab picture save to】** Fill in the save path that you want your captured pictures to be saved to.

**【Language】** Show the current language. You can change when there is another language pack.

**【Window Split Mode】** Select window split mode for NVR between "Normal Mode" and "Wide Screen". You would better select "Wide Screen" when you are using wide screen monitor. You should re-select the view window number to refresh the window split mode status.

**【PC Decoder Function】** Select "Enable" so that you can use PC decoder function later. It will be described in details in PC Decoder Manual.

**【PDA Connect Port】** The port is for PDA connection. Blackberry and iPhone etc are supported. When connect a mobile client to NVR, all servers connected in NVR will be listed in your mobile. Select one from the list to view or operate.

[illegible]

**【Server Name】** Input a name that is easy to identify.

**Note:**

**【IP Address】** Set IP address of server host.

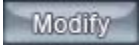
**【Connect Port】** Set the port through which connects to DVR Server.

**【Login user ID/Login Pass】** When the client want to visit server and the server has used the function of rights management, login user ID and password will be checked. If the user has no right to visit that camera, connect will be cut down automatically. If the function is not used, the ID and password will not be checked.

**【If use DNS to get IP】** Select whether use DNS to get IP or not, if the server end is the dynamic IP address, users need use DNS to get the server's IP.

**【DNS Server IP】** Set IP address of DNS server host.

**【DNS Server Port】** DNS server host's port, which is provide to connect DNS software.

**【Modify server】** Press  button to modify server information, its interface is same as Add Connected Server.

**【Delete connected server】** Press  button to delete a connected server.

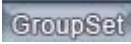
**【Motion Alarm Play Wave File】** Select the wave file which the motion alarm plays.

**【Sensor Alarm Play Wave File】** Select the wave file which the sensor alarm plays.

**Note:**

When you finish the setups you should save your changes by pressing SAVE button before you exit setup.

## 2.2 Group Setup

Click  button to enter the following window:

SYSTEM SETUP				
Window	Server Name	Camera	Frame Rate	Stream Type
Window1	123	1	Automatic	Main Stream
Window2	123	2	Automatic	Main Stream
Window3	123	3	Automatic	Main Stream
Window4	123	4	Automatic	Main Stream
Window5	123	5	Automatic	Main Stream
Window6	123	6	Automatic	Main Stream
Window7	123	7	Automatic	Main Stream
Window8	123	8	Automatic	Main Stream
Window9	102	1	Automatic	Main Stream
Window10	102	2	Automatic	Main Stream
Window11	102	3	Automatic	Main Stream
Window12	102	4	Automatic	Main Stream
Window13			Automatic	Main Stream
Window14			Automatic	Main Stream
Window15			Automatic	Main Stream
Window16			Automatic	Main Stream

Select Setup Group Connection Group 01 Partition Mode 16 View Group Name

Choose a group from drop-down list behind “Select Setup Group” first. There are 18 groups. In every group, you can set 64 connections. Also, you can select the partition for every group from the drop-down list behind “Partition Mode”. Then you can set group as follows:

**【IP Address Alias】** Select the server in which the camera will be selected to show. If it has no server in the drop-down list, you need to add server in the “Server IP” page.

**【Camera】** Select the camera of the server set in **【IP Address Alias】** to be connected. In one window, you can set one or more camera's connection (), if more than one camera show in one window, you can set cycle interval time.

You can switch them by pressing button Stop Cycle and Restore Cycle in Main interface.

**SYSTEM SETUP**

Window	Server Name	Camera	Stream Type
Window1	123	1	Stream
Window2	123	2	Stream
Window3	123	3	Stream
Window4	123	4	Stream
Window5	123	5	Stream
Window6	123	6	Stream
Window7	123	7	Stream
Window8	123	8	Stream
Window9	102	1	Stream
Window10	102	2	Stream
Window11	102	3	Stream
Window12	102	4	Stream
Window13			
Window14			
Window15			
Window16			

<input checked="" type="checkbox"/> Camera01
<input type="checkbox"/> Camera02
<input type="checkbox"/> Camera03
<input type="checkbox"/> Camera04
<input type="checkbox"/> Camera05
<input type="checkbox"/> Camera06
<input type="checkbox"/> Camera07
<input type="checkbox"/> Camera08
<input type="checkbox"/> Camera09
<input type="checkbox"/> Camera10
<input type="checkbox"/> Camera11
<input type="checkbox"/> Camera12
<input type="checkbox"/> Camera13
<input type="checkbox"/> Camera14
<input type="checkbox"/> Camera15
<input type="checkbox"/> Camera16
<input type="checkbox"/> Camera17
<input type="checkbox"/> Camera18
<input type="checkbox"/> Camera19
<input type="checkbox"/> Camera20
<input type="checkbox"/> Camera21
<input type="checkbox"/> Camera22
<input type="checkbox"/> Camera23
<input type="checkbox"/> Camera24

Stream Type
Stream
Stream
Stream
Stream
Stream
Stream
Stream
Stream
Stream
Stream
Stream
Stream
Stream
Stream
Stream
Stream
Stream
Stream
Stream
Stream
Stream

Auto-Cycle interval(Sec.) 5

OK
CANCEL

Select Setup Group Connection Group 01
Partition Mode 16 View
Group Name

【Frame Rate】 There are three options: Real-time, Auto and 1fps.

**Real-time:** If it's selected, server will send all compacted information to client. When the client gets this information, it will play it. The continuity is good in this way but it consumes too much CPU space. If there is no information losing when compacting and sending, the playing will be real-time.

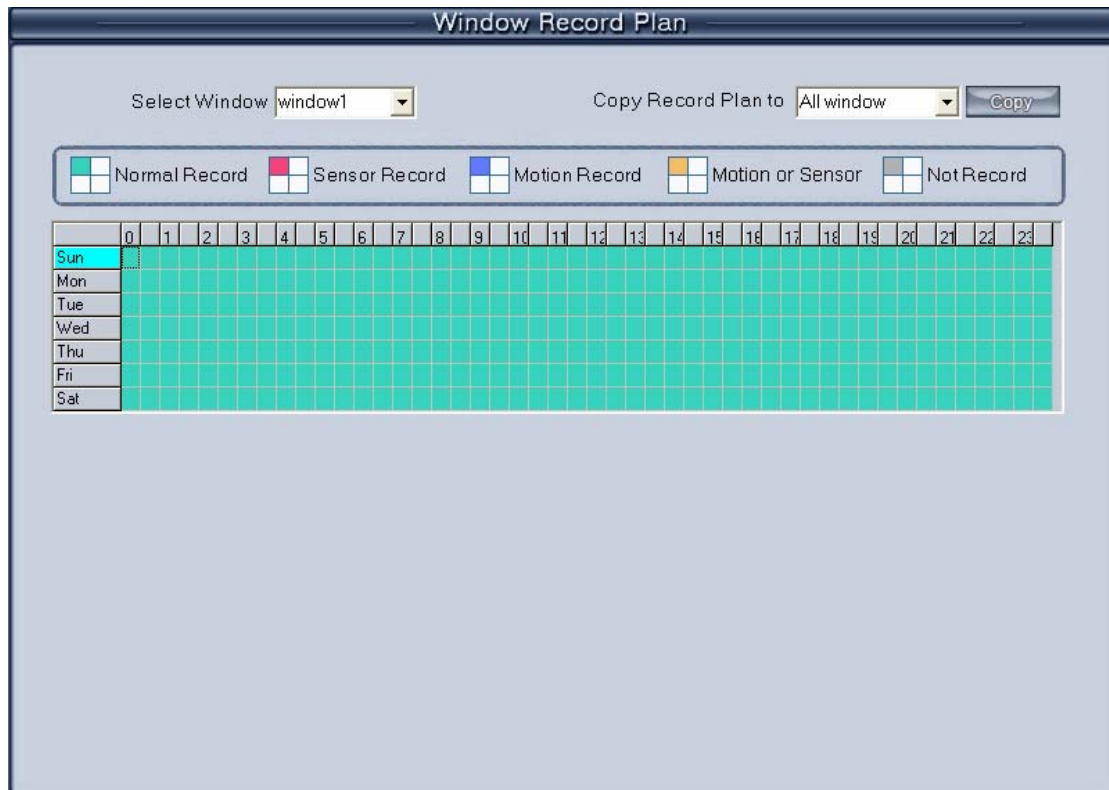
**Auto:** Its difference from Real-time is that when the client gets the information, he will cut some information and then play it. It consumes less CPU space. But if you click any camera, system will adjust frame rate to Real-time automatically.

**1fps:** It means to break down the information in server. Only one frame of important information is sent to the client every second. It consumes little CPU space and network. And if you click any camera, system will adjust frame rate to Real-time automatically when there is enough network space. (NOTE: This selection is only effective on PC-DVR).

【Stream Type】 Select the stream type main channel or sub channel for the current camera.

## 2.3 Record Setup

Click RecordSet to enter the record setup interface.



**【Select Window】** Select the window you want to set.

**【Record type】** Set the type of record, including **Normal record**, **Sensor record**, **Motion record**, **Motion or Sensor record** and **Not record**. You can set record type as follows:

Firstly, press the type button that you want to set; then select the record time by press the grid (delegate half an hour in a day) or left-click mouse and drag for an area. If you want to set same record status every half hour every day, you may double-click the left up of the chart.

When you finished the setup, the grid will display the corresponding color of the record type.

Green: Normal Record.

Red: Sensor Record.

Blue: Motion Record.

Yellow: Motion or Sensor Record.

Gray: Not Record.

**【Copy Record Plan to】** Copy the setup to any other window or all windows.

## 2.4 Right Setup

Click **Right Set** button to set user right.

The screenshot shows two panels: 'USER SETUP' and 'RIGHT SETUP'.

**USER SETUP**

Use Password:  Auto Lock Time:

User Name:  Auth.Level:  Password:  Confirm Password:

Buttons: New User, Mod User, Del User

User Name	Auth. Level
admin	Manager
user	operator

**RIGHT SETUP**

☒ Local Setup      ☒ Local Playback      ☒ View Local Log  
☒ Local Manual Record      ☒ Color Adjust      ☒ View Remote Log  
☒ Remote Setup      ☒ Remote Playback      ☒ Local List Connect  
☒ Exit Program      ☒ Program Minimize      ☒ Local Group Connect  
☐ Disk Management

### 2.4.1 User Setup

**【Add User/Del User】** Click **Add User** / **Del User** icons to add /delete user for the Client, after that you can edit the information for the user to be added.

**【Select User ID】** Select a user that has existed in the system to be modified from drop-down list.

**【Use Password management】** Select a solution to determine if enable user password validation. When you select enable, when user login, password is needed.

**【User ID】** Input new User ID in this box when add a new user to system.

**【Select User ID】** This selection is unavailable.

**【Password】** Set new user and selected user's password.

**【Auth. Level】** Select user type. When you select admin in **【Select User ID】** this selection is unavailable.


**【Confirm password】** Confirm password again.

## 2.4.2 Right Setup

You can set user management in this window after you input user name and password and you will have corresponding rights with your name. Choose a user and distribute corresponding right.

When manager doesn't want some operators to manage disk, he should not check this right for those users. For example, "admin" doesn't want "user" to own the right, he should select "user" first, and click "Modify", and then, check the "V" in front of "Disk Management".



After set, click the button  to save the information.



## Chapter3 Local Search


### 3.1 Main Interface

Select **Local Playback** to enter local search interface as below:



### 3.2 Partition Mode



Press  button to select partition mode, there are 1, 4, 9 and 16 partitions mode. In the server end user can only connect 16 channels simultaneously. When the connected channels exceed the limit, system will popup information to indicate it.

## 3.3 Playback

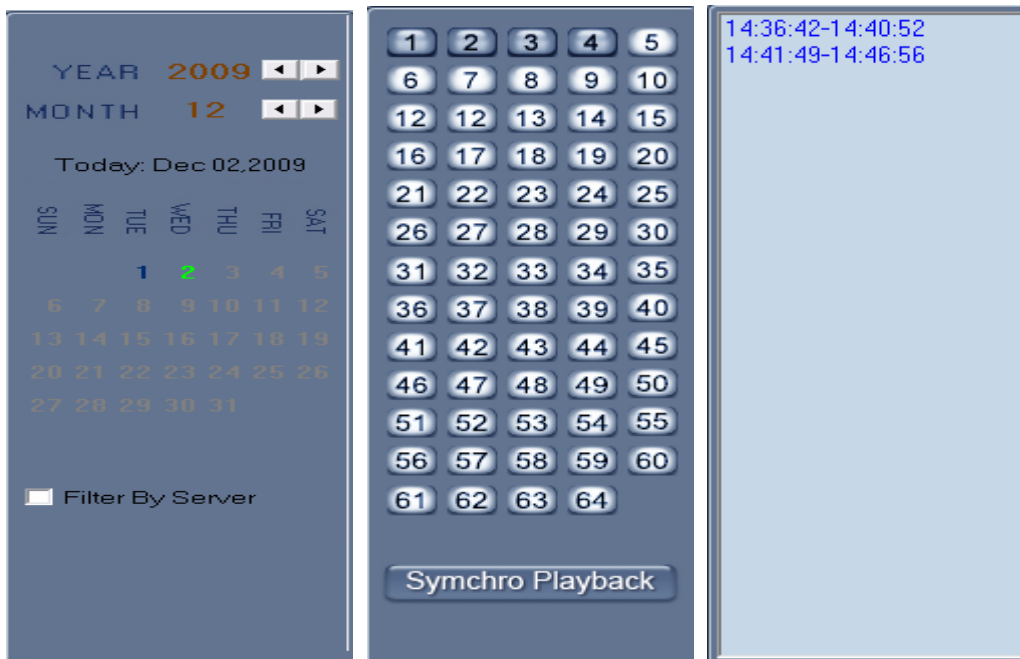
### 3.3.1 Select Date



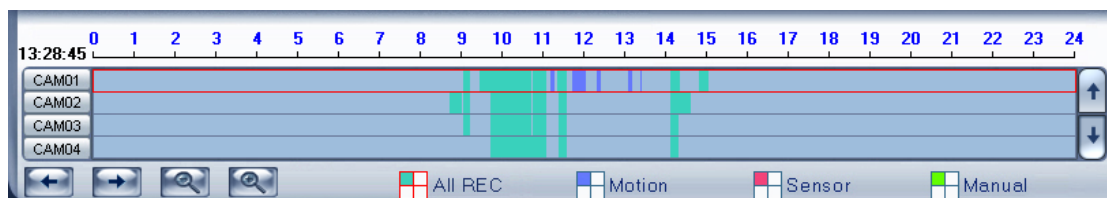
Select one window (the 1<sup>st</sup> one in default), and then click **DATE** button to show the date.

The blue dates contain recorded data. The green date is the current date. The gray dates signify no data. Only those blue ones can be selected and when they are selected the camera window will appear automatically to show which cameras has record data.

Click or to change month and year of search data.

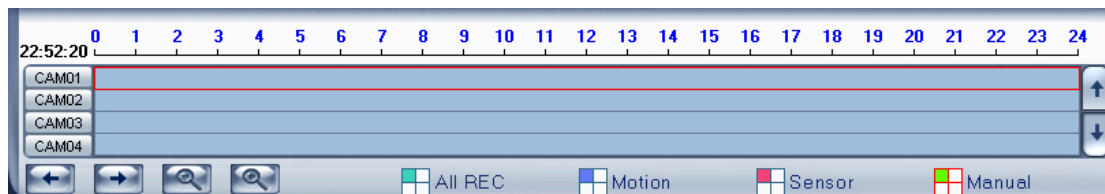


### 3.3.2 Select Record Type




Press the icon before “Motion” when you want to playback motion recording. Others are the same.

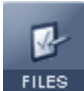
When there is no record data of the selected record type, the below picture will be shown.




### 3.3.3 Select Camera

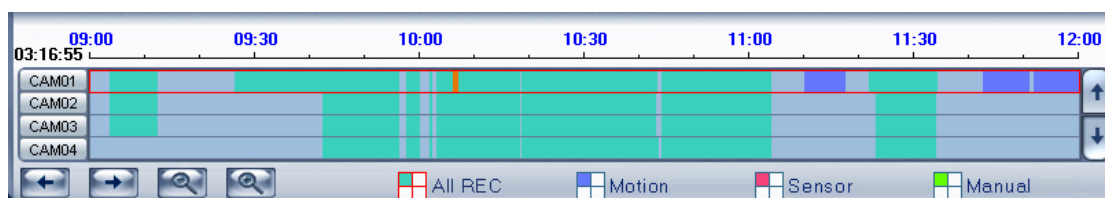
After selected the date system will show the camera state of corresponding day, or click  button directly to show the cameras state of current day. The number button with navy blue means this channel has record data. By pressing it directly on the numerical panel, DVR system will play back recorded data from the first file.



### 3.3.4 Select File

After selecting the camera to play user can click  button to show all the files of this camera.

By default, system will play back video file from the first one. In this screen you can change the file you want to play by clicking it directly.

The camera list below the window shows the recorded data of the day you select. Double click any time with record data, a red mark will be there. Then use  to enlarge the time bar, so that you can select an exact time you want to playback.



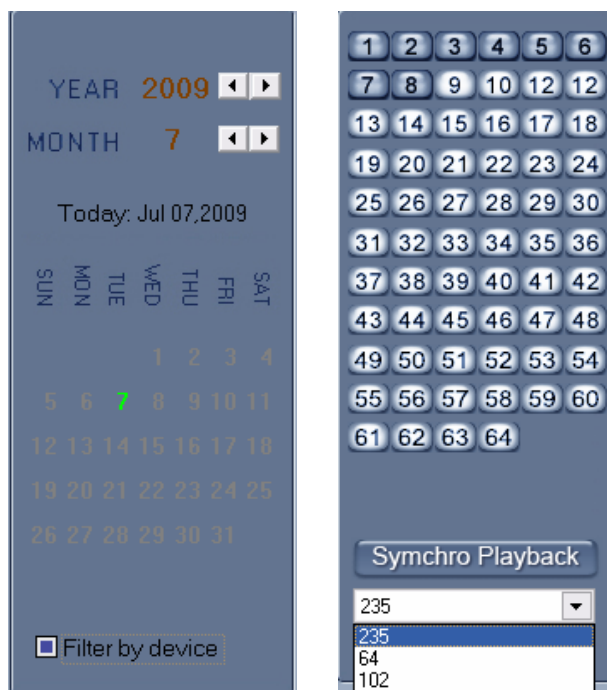
When there are too much record data, you can use   to select.

Press  or  to view the record data of other cameras.

The red bar shows the exact time when system is playing back now.

**Note:**

When you check **Filter by Server** in Date Select panel, there will be a server list in Camera Select panel. Select one server to search its record data.



Also, user can click **FILES** button to show all the files of this camera.

## 3.4 Play File and Related Operations

### 3.4.1 Play Files



Press **Play** button to open all playback windows in turns according to the order of the cameras.

**Note:**

If you press this button as soon as you enter the playback interface, all the cameras will be played back from the beginning of this day when there is record data. For example, there is record data from 8:00 AM to all cameras, then, they will be played back from 8:00 AM. If you select a point of time on the time bar and then press this button, then, all the cameras will be played back from that time.



Press **Close** button to close all playback windows.

**Symchro Playback**


Click this button to synchronize all playback channels time.



Last frame, Start, Pause, Stop and Next frame.



First frame of that day, Previous minute, Next minute and Last frame of that day.

 Image zooms out: Press this button, single click the left mouse button on an image, quarter of the image will be enlarge. By thereafter, single click right mouse button on the image, it will resume.



Adjust the voice: click the button to clear the voice.



Adjust playing speed: click the button to resume normal playing speed.

**Note:**

It is not suggested that multi-channel (more than 10 channels) record and playback coinstantaneous unless your PC has a wonderful configuration, because the data throughput of HDD is huge. Multi-channel search in client and server are the same except their paths. In client, there are local and LAN search. In LAN search, it searches among the record data in the local network of server.

### 3.4.2 Capture Pictures



Click capture button to capture a display picture. When one is captured, there will display a dialog interface and you can change the file name. After you press confirmation, system will save the picture in default path: System volume\Grab\search.

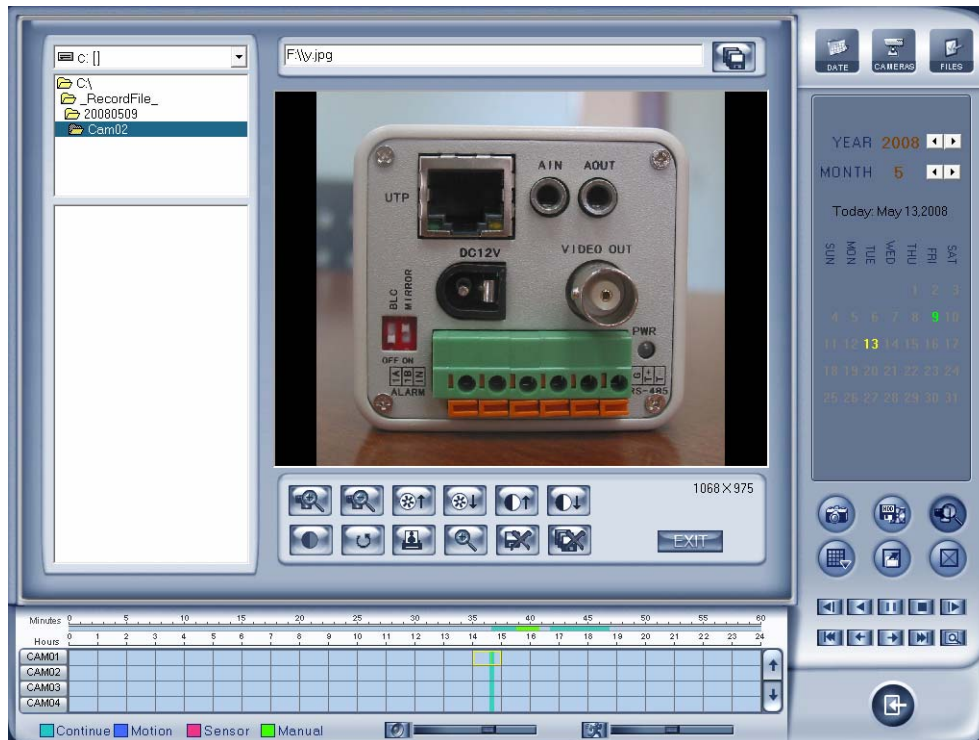
**Note:**

The size of the image is that of the playing window.

### 3.4.3 Search Captured Pictures

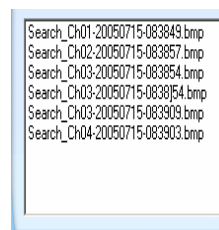
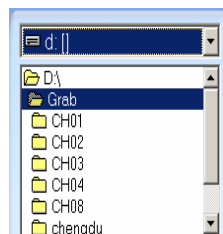


Click to enter the search window.



## 1. Select Pictures from Directory and File List

You can select a captured picture from directory list and file list in local disk. By default, the directory is: System volume\Grab\Search. After you select the path the file name will show in the top of the window.



## 2. Related Operations



After you edit the picture you can save the picture in a save path as you like.



Function buttons of picture disposal.



When the result of disposal is not good click it to the default.





Print picture, when the image is wider than 400 pixels, it will be printed smaller. On the other hand, it will be printed bigger.



When it's bright, with the mouse moving, part of the picture will be enlarged.



Delete current file or delete all files.

## 3.5 Backup

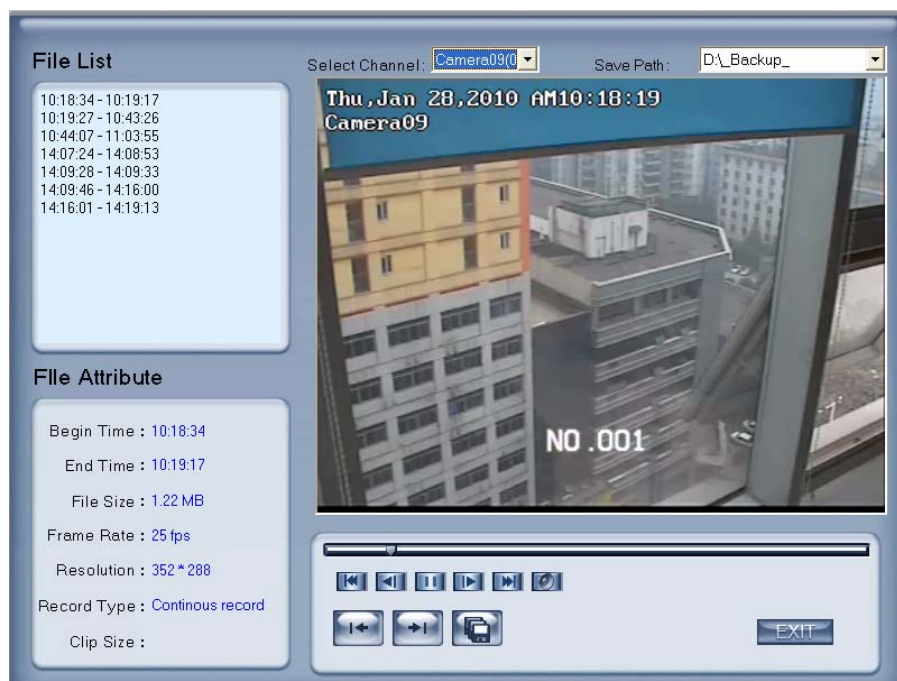


Click button , there are follow 4 items to select.

Create file clip  
Backup by time  
View backup file  
Burn backup file

### 3.5.1 Create File Clip

Click **Create file clip** to create file clip.

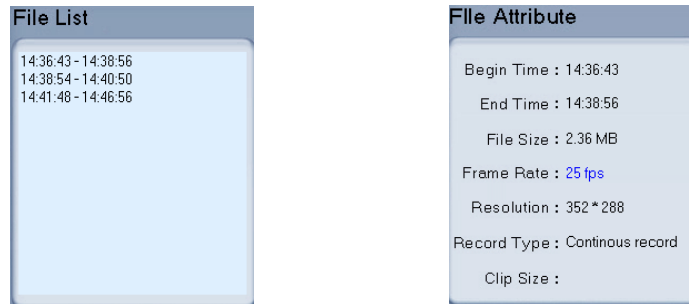


## 1. Select Channel and Path

Select channel and path of the backup file on the top of interface.

## 2. File List and Attribute

Select a file and double-click it to play and its attribute will display below the list, including begin time, end time, file size, resolution, frame rate etc.





## 3. Play File and Related Operations

### (1). Play Control


Press and drag slider on button to control the player time.




### (2). Beginning and Stop Time Setup

Press   to set the beginning time and end time of the file, the file attribute on the left will show the size of the file.

### (3). Save File

Press  to ensure the beginning and end of the file, click it to save the file.

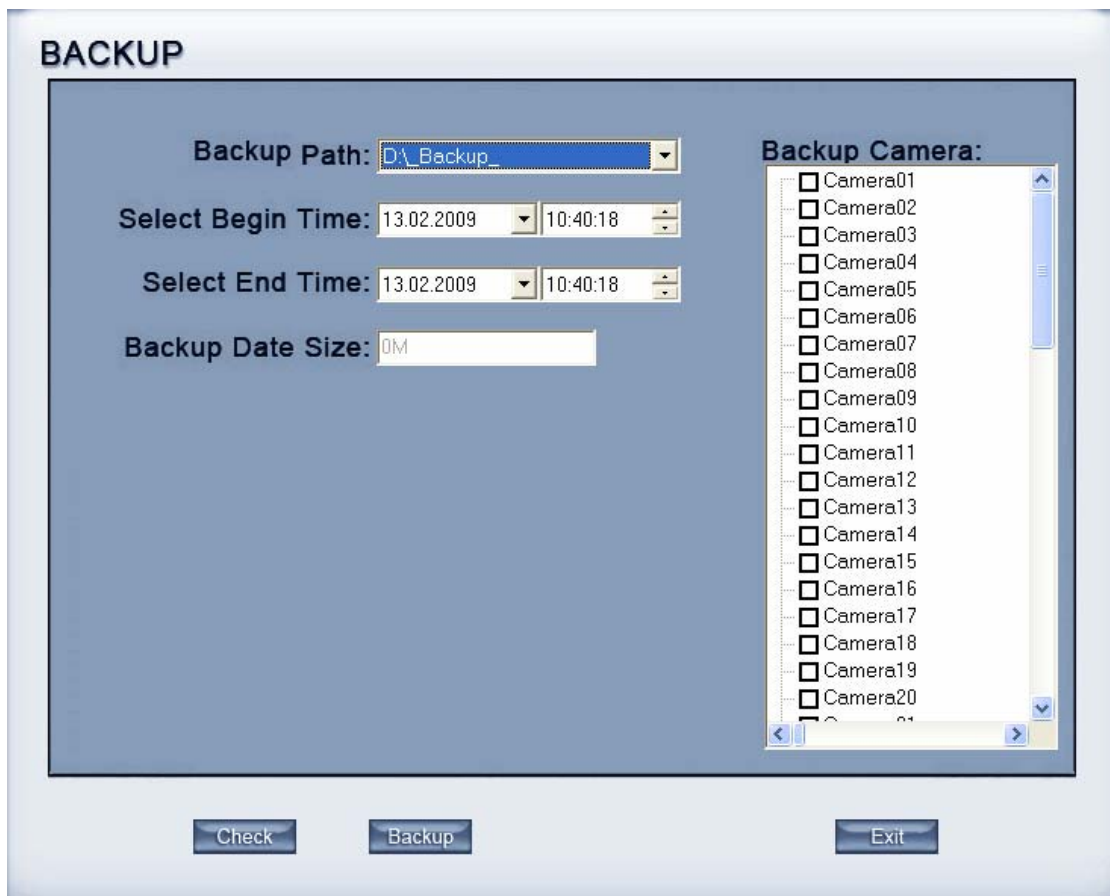
### (4). Voice Control

Click  to control voice, press it to clear voice.

## 3.5.2 Backup by Time

Click **Backup by time** to backup by time.





## 1. Save Path

Select path for the backup file, User can backup record file to CD.

## 2. Backup Camera

Select the backup camera. User can select more than one camera once.

## 3. Select Begin/End Time

Select the backup files' begin time and end time.

## 4. Backup Data Size

Show the size of the backup file. If user backups record file to CD directly, the data size should not be more than 650M.

### **Note:**

If user backup record files to CD directly, the system disk volume's (C volume in general) free space should not less than twice of the backup data size. Because system volume will be used buffer area when burn CD. For example, if the backup data size is 450M, so, the system volume's free space

should be more than 900M.

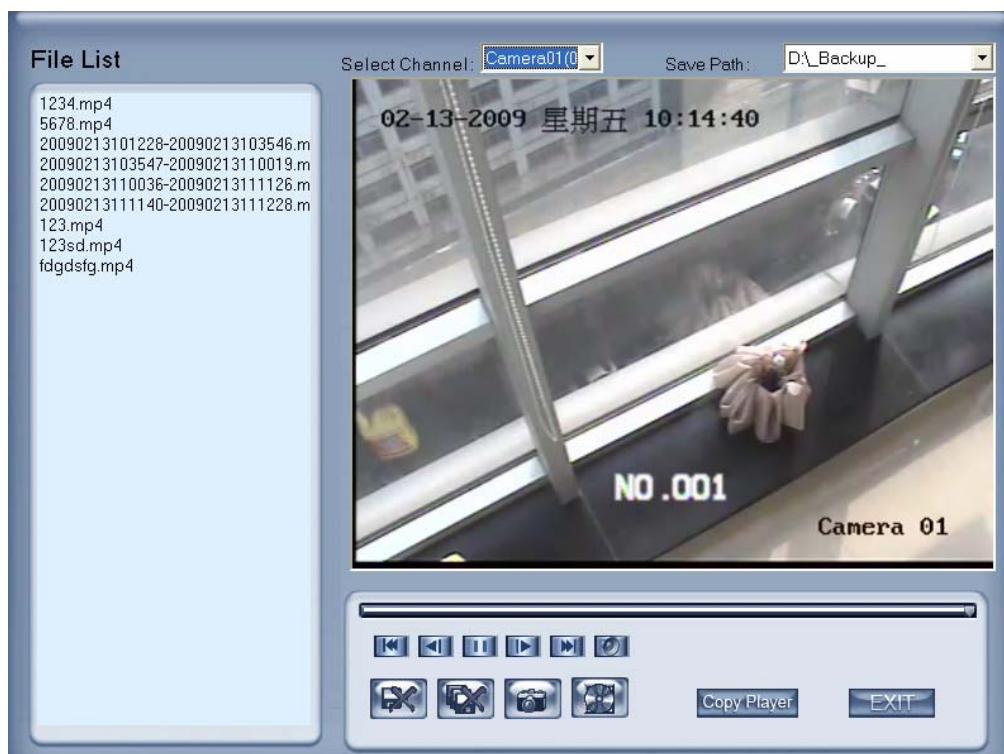
The process of burning CD:

- 1) Select CD-ROM as the backup path, and select the camera and time;
- 2) Check the backup file value;
- 3) Backup the file to the temporary file in the last volume if there have enough free space, otherwise, write backup file to the last second volume;
- 4) Write back up file to buffer;
- 5) Write CD;
- 6) Delete buffer and temporary file.

### 3.5.3 View Backup File

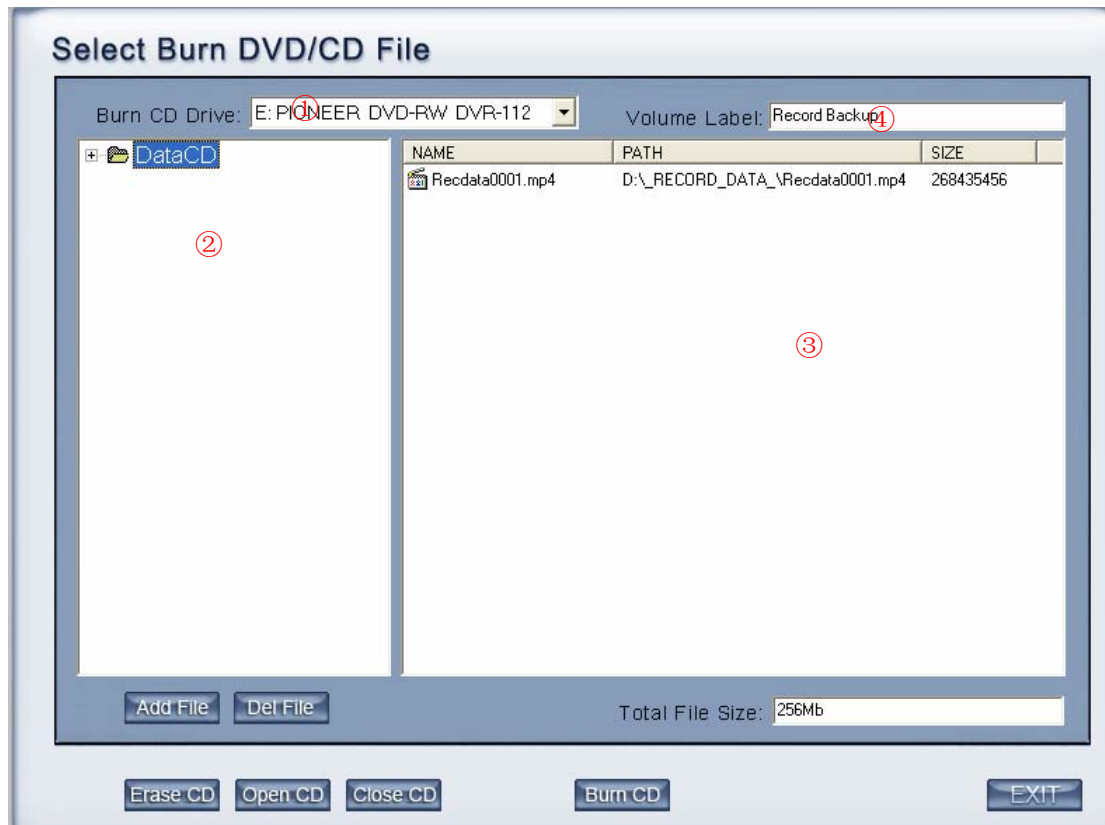
Press  to view backup files.

Select channel and path of the backup file in local disk on the top of interface.



### 3.5.4 Burn CD

Press  button to burn CD.



Area ①: File directory.

Area ②: File list.

Area ③: The File directory and list of will be burned to CD.

Icon ④: Create a new directory in area ③.

**Add File**: Add selected file from area ② to area ③.

**Del File**: Delete selected file from area ③.

**【Burn CD drive】** Select CD-ROM driver.

**【Volume label】** Set the CD's label.

**【Total file size】** Show the size of all files will be burned to CD.

**Burn CD**: When you finish your setup, click this button will write file to CD.

## Chapter4 Remote Setup

### 4.1 For PC-DVR

Remote setup for PC-DVR is nearly the same as local setup in DVR. For details, please refer to our *DVR User Manual*.

### 4.2 For DVS and EM-DVR

The remote setup interface of NV Series IP devices is as below:

Field	Value
Server Name	9 IP server
Server IP	192.168.0.9
Listen Port	8000
Subnet Mask	255.255.255.0
Net Gate	192.168.0.1
Net Cable Type	10M/100M[5 cable]
Use PPPOE	<input type="checkbox"/>
PPPOE Login Name	
PPPOE Login Pass	
PPPOE IP	
User name	admin
User Pass	*****
DNS Server IP	192.168.0.119
Remote Manage IP	
Remote Manage Port	7071
Physical address	00:40:30:4e:fd:7e
Software Ver.	V2.0 build 080812
DSP software Ver.	V4.0 build 080729
Hardware Ver.	0xb0000000

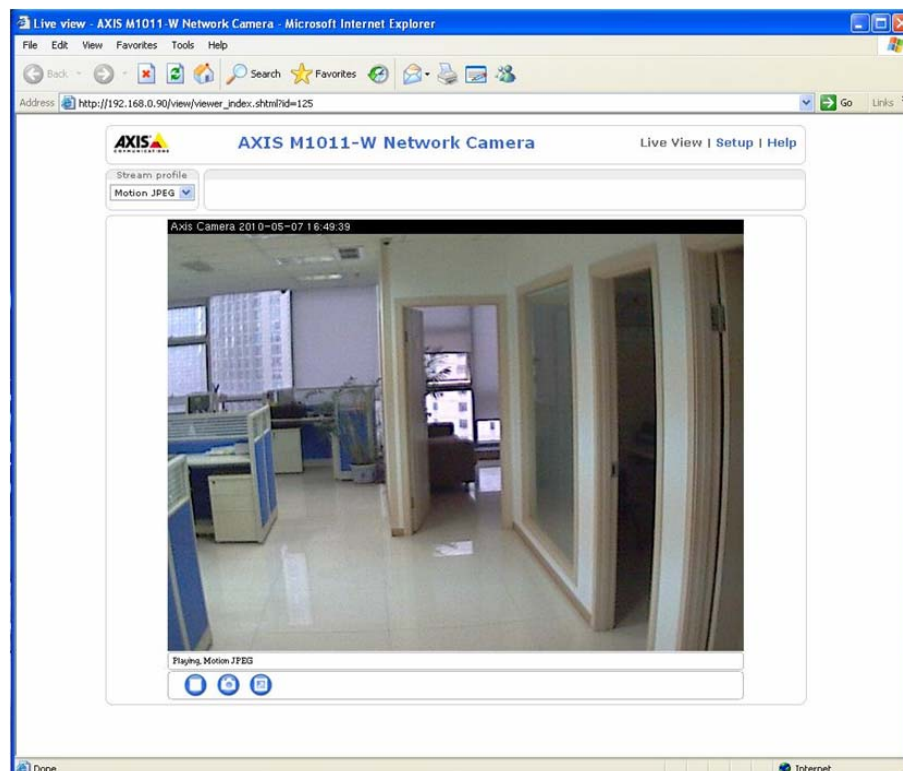
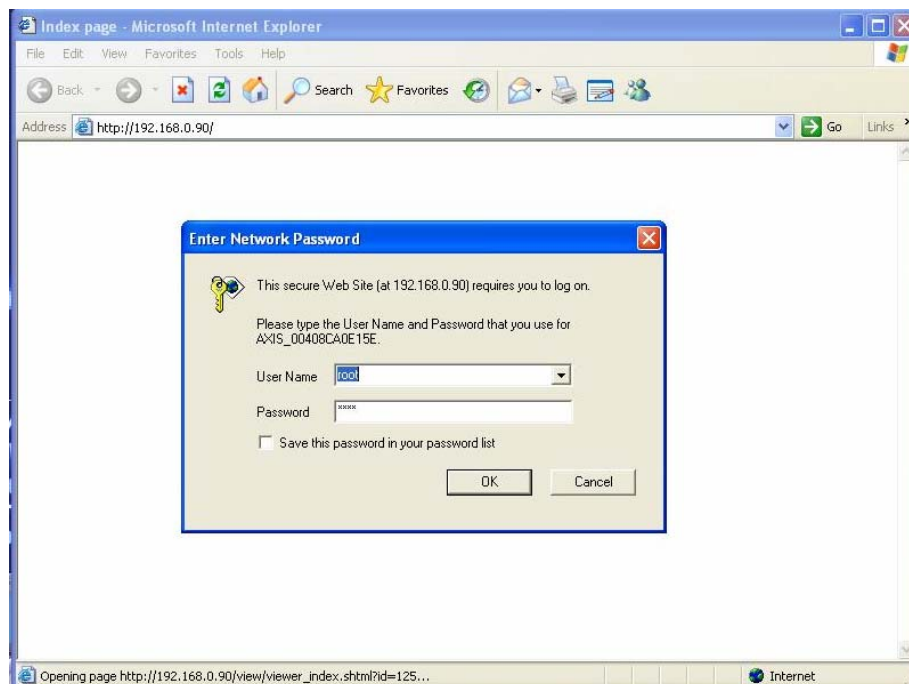
Buttons: Upgrade, Restart, Time Adjust, Save, Exit

For DG Series EM-DVR, the interfaces are not exactly the same as NV Series. Remote setup for DG Series EM-DVR includes Server, Channel, Record, PTZ, Sensor, Alarm and User.

But the ways of set are nearly the same. For details, please refer to our DG Series EM-DVR manual.

For other series IP cameras, such as DG Series IP, Sony SNC110/160, ACTi Series IP, Huvion Series IP, Mobotix M12 Series IP, ArecontVision IP, Camtron Series IPC, Axis Series IPC, Vivotek Series IPC and SanYo Series


IPC, you will enter the IE interface automatically when you press “Remote Setup”. You have to install ActiveX too.





## 4.2.1 Functional Buttons


There are 5 buttons in each page. They are Upgrade, Restart, Time

adjustment, Save and Exit.

 The system can upgrade to the server remote. Click this button, and select the right file.

 Some setting will only come into effect after device reboots.


 Adjust date and time of DVS or EMDVR. The new date and time will accordant with NVR client computer.

 After setup is finished, click this button to save the setup.

 Exit setup.

Remote setup for DVS includes Server, Channel, PTZ, Sensor and Alarm.

## 4.2.2 Server Setup

Press  button to set server parameters remotely:

Server Name	Embedded Net DVS	User name	admin
Server IP	192.168.0.8	User Pass	*****
Port	8000	DNS Server IP	0.0.0.0
Subnet Mask	255.255.255.0	Remote Manage Ip	0.0.0.0
Net Gate	192.168.0.1	Remote Manage Port	0
Net Cable type	10M/100M(5 cable)	Physical address	00:40:30:4e:fd:7e
Use PPPOE	<input type="checkbox"/>	Software Ver.	2.0
PPPOE Login Name		Dsp software Ver.	4.0
PPPOE Login Pass		Hardware Ver.	45056.0
PPPOE IP	0.0.0.0		
Serial NO	DS6101HF0020070314BCCH001000110WCU		

In the server window, some blanks' background are gray. Those parameters are read from foreside server, you can't modify them. Other blanks whose background is white, you can set them remotely.

**【Server Name】** Enter the name description for easy identification. This name delegates the foreside server. If use DNS to get IP, this name will be used.

**【IP configuration and related】****【Server IP】****【Port】****【Subnet Mask】****【Net Gate】****【Net Cable Type】**

} These are network configurations. You can set LAN or Internet IP according to your need.

**【If use PPPOE】****【PPPOE Login Name】****【PPPOE Login Pass】**

} If system uses PPPOE to connect with web, please select it and input the PPPOE login ID and password.


**【User Pass】** Set the user password of DVS remotely, after that operation you should change the Login Pass to corresponding value in Add / Modify server. Otherwise, you can't connect the DVS correctly.

**【DNS Server IP】** If use DNS, input the DNS host IP address.

**【Remote manage】****【Remote manage IP】****【Remote manage port】**

} Set the IP address and port of host server who will receive the message upload from foreside server

### 4.2.3 Channel Setup

Press  button to set channel parameters.



This section contains the parameters to designate a name for every camera connected, to enable or disable show LOGO and OSD, and to set display type of OSD & LOGO as well as record resolution, record type, record quality and frame rate, etc.

**【Camera】** Select the camera to be set from the drop- list.

**【Camera Name】** Enter a name description for easy identification.

**【Frame Rate】** Select the record rate of camera from drop-down list.

**【Mainstream】 【Sub Stream】** Select Mainstream or Sub Stream for the current cameras.

**【Resolution】** Set the resolution at which the video files will be recorded. Choices are DCIF, CIF, QCIF, 2CIF and 4CIF. The higher the resolution is, the more disk space needed.

**【Stream Type】** Select video and audio or only video record.

**【Image】** Set the quality of the image to be recorded. Select from worst, worse, normal, good and best.

**【Bit Rate Type】** Select bit rate type from Variable Bit Rate (VBR) and Fixed Bit Rate (FBR) record:

VBR range= Poorest, Poor, Medium, Good, Best.

FBR range = 45 Megabytes/Hour to 400 Megabytes/Hour.

**【Max Bit Rate】** Select the maximum bit rate for Variable Bit Rate (VBR) record.




**【Show LOGO/ OSD/ Week】** If you check those box, system will show corresponding information on screen.

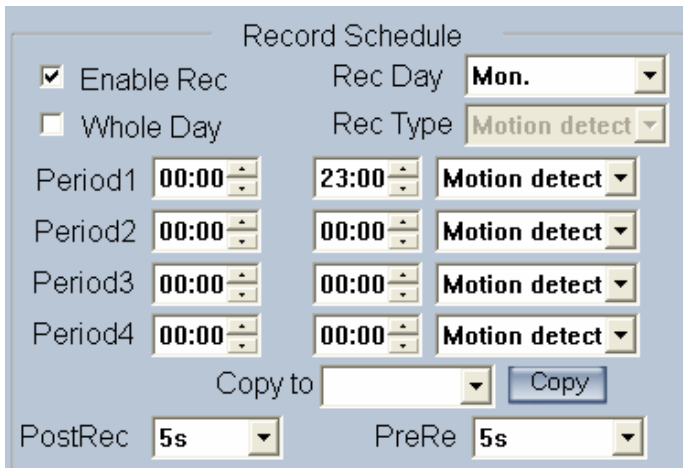
**【Position】** Set the position of OSD or Logo by entering the X and Y coordinate directly.

**【OSD】** Set the display attribute of the OSD & LOGO. There are four types display modes: Clarity-Glitter, Clarity-Not Glitter, Not Clarity-Glitter and Not Clarity-Not Glitter.

**【OSD Type】** Select the type of OSD for the Week.

**【Privacy Mask】** You can check this box to set the privacy mask on the below image directly, and you can clear some privacy masks by pressing  button.

**【Record schedule】** You can set record schedule in following chart.




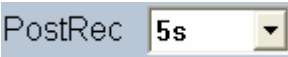
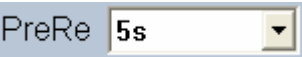
The 'Record Schedule' window contains the following controls:

- ☒ Enable Rec
- ☐ Whole Day
- Rec Day: **Mon.** (dropdown)
- Rec Type: **Motion detect** (dropdown)
- Period1: 00:00 (start) to 23:00 (end), Motion detect (type)
- Period2: 00:00 (start) to 00:00 (end), Motion detect (type)
- Period3: 00:00 (start) to 00:00 (end), Motion detect (type)
- Period4: 00:00 (start) to 00:00 (end), Motion detect (type)
- Copy to: (dropdown) [Copy button]
- PostRec: 5s (dropdown)
- PreRe: 5s (dropdown)

**Note:**

This record schedule is only available to EM-DVR. There are 4 time segments every day. Every segment has start time, end time and record type. The time segment is set in sequence; every segment can't be overlapped, included or skipped with any other.

**【Copy to】** After finishing one channel, if you want to set any other channels' configuration as the same as this camera, you can select channel number from drop-down list, and press  button.

 , Set the time to post or pre the record.

## 4.2.4 PTZ Control

Press **PTZ** button to set PTZ.

Camera  Copy to

BaudRate  PTZ Protocol  PTZ Address

Speed

Focus+ Focus- Up  
Iris+ Iris- L R  
Zoom+ Zoom- Dn

Preset Setup

Name  Preset

Mode

Preset Name	NO.
22	2
33	3

No PTZ action  sec back

Home Position

In this screen, you can define the PTZ protocol and set the Preset Position as well as the plan to execute them automatically.

**【Camera】** Select the camera to be set from the drop- list.

**【Baud rate】** Set baud rate according to PTZ protocol from the drop- list.

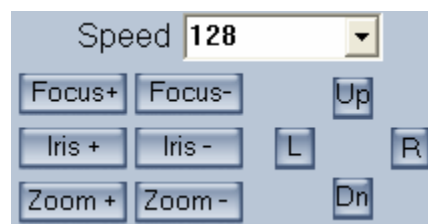
**【PTZ Protocol】** Select the communication protocol for the PTZ camera from drop-down list.

**【Copy to】** After finishing one channel, if you want to set any other channels' configuration as the same as this camera, you can select channel number from drop-down list, and press **Copy** button.

**【PTZ Address】** Set the address of the decoder, which must be matched with the value of dipswitch in the PTZ.

**【Speed】** Set the speed of the PTZ.

**【Preset position & schedule setup】** Define preset position and set time to call preset position automatically. System can add and delete plan time.



Preset Setup

Name  Preset

Mode

Preset Name	NO.
22	2
33	3

No PTZ action  sec back

Home Position

**AutoPre**

**【Name】** Set the name for the current preset. **【Preset】** Set the preset number for the current camera  Setup the preset by current configuration.  Delete the finished Preset.  Call the Preset if the Mode is Call preset. The mode is save preset; you should save the preset and shouldn't call the preset.

sec back  Set disable or how long the puts will come back to the home position when there is no PTZ action.

**Sch.**

Preset Schedule

Preset

Call Time   H  M

Schedule List

Date	Time	Preset
Mon.	00:00	2

<  >

**【Preset】** It can add the preset into the Preset Schedule, the preset set completed in the Auto Pre yet, **【Call Time】****【Schedule List】** Set the time of the preset should be call at that time.

Tour Setup

Tour Group

Preset Name

Stay Time  sec

Preset Name	NO.	Time
22	2	10

<  >

### **Tour Group**

Add the Preset cameras into the Tour Group and set the Stay Time for one tour group.

## **4.2.5 Sensor Setup**

Press  button to set sensor parameters.

**【Sensor NO】** Select one sensor to be set.

**【Sensor Name】** Enter the name description of the sensor.

**【Type】** Select alarm type (sensor type) from “NO”(Normally Open) or “NC”(Normally Close).

**【Policy】** Selecting “Sensor Alarm Handling” firstly, handling policies will be available as follows:

On screen warning—Display the alarm information on the monitor.

Audio warning—Indicate the alarm with voice.

Upload to center—Update the alarm information to center.

Trigger alarm out—Trigger alarm box to output the alarm.

**【Trigger record camera】** Set cameras to record triggered by the alarm. You can select one or more channels. When there is alarm input, the cameras will be triggered to record (the record type of the channel is Alarm Record), and the monitor will switch to preview the cameras (warning on monitor is enable).

**【Preset】** Set camera that will move to its one preset position when the alarm happened.

**【Schedule】** Set alarm input precaution time firstly, then set time segment according to the sequence. The time of each segment should not overlap the others and no skips are allowed. After the precaution time of a certain day is set, you can copy the parameter to other dates by select a day and press copy button.

**【Copy to】** After finishing one channel, if you want to set any other channels' configuration as the same as this camera, you can select channel number from drop-down list, and press **Copy** button.

## 4.2.6 Alarm Setup

Press **Alarm Setup** button to set alarm parameters.

**【Camera】** Select a camera to be set from the drop-down list and you can copy the configuration to the other cameras by clicking copy button.

**【Alarm Type】** Select alarm type: Motion detection, Tempering alarm and Video Loss.

**【Level】** Select sensibility levels from 0 (the lowest level) to 5 (the highest

level) for the alarm.

**【Set motion detection areas】**Left-click mouse and drag it on the screen to select motion detect area, you can select the whole area or many areas. Also, you can clear one or whole area by press the button clear and test the effect by clicking test button.

**【Policy】** Select “Handling current alarm” firstly, handling policies will be available as follows:

On screen warning—Display the alarm information on the monitor.

Audio warning—Indicate the alarm with voice.


Upload to center—Update the alarm information to center.

Trigger alarm out—Trigger alarm box to output the alarm.

**【Trigger record camera】** Set cameras to record triggered by the alarm. You can select one or more channels. When there is alarm input, the cameras will be triggered to record (the record type of the channel is Alarm Record), and the monitor will switch to preview the cameras (warning on monitor is enable).


**【Schedule】** Set alarm input precaution time. Select date firstly, then set time segment according to the sequence. The time of each segment should not overlap the others and no skips are allowed. After the precaution time of a certain day is set, you can copy the parameter to other dates by select a day and press copy button.

Schedule		
Day	[Dropdown]	
Period1	[00:00]	[00:00]
Period2	[00:00]	[00:00]
Period3	[00:00]	[00:00]
Period4	[00:00]	[00:00]
Copy to	[Dropdown]	[Copy]

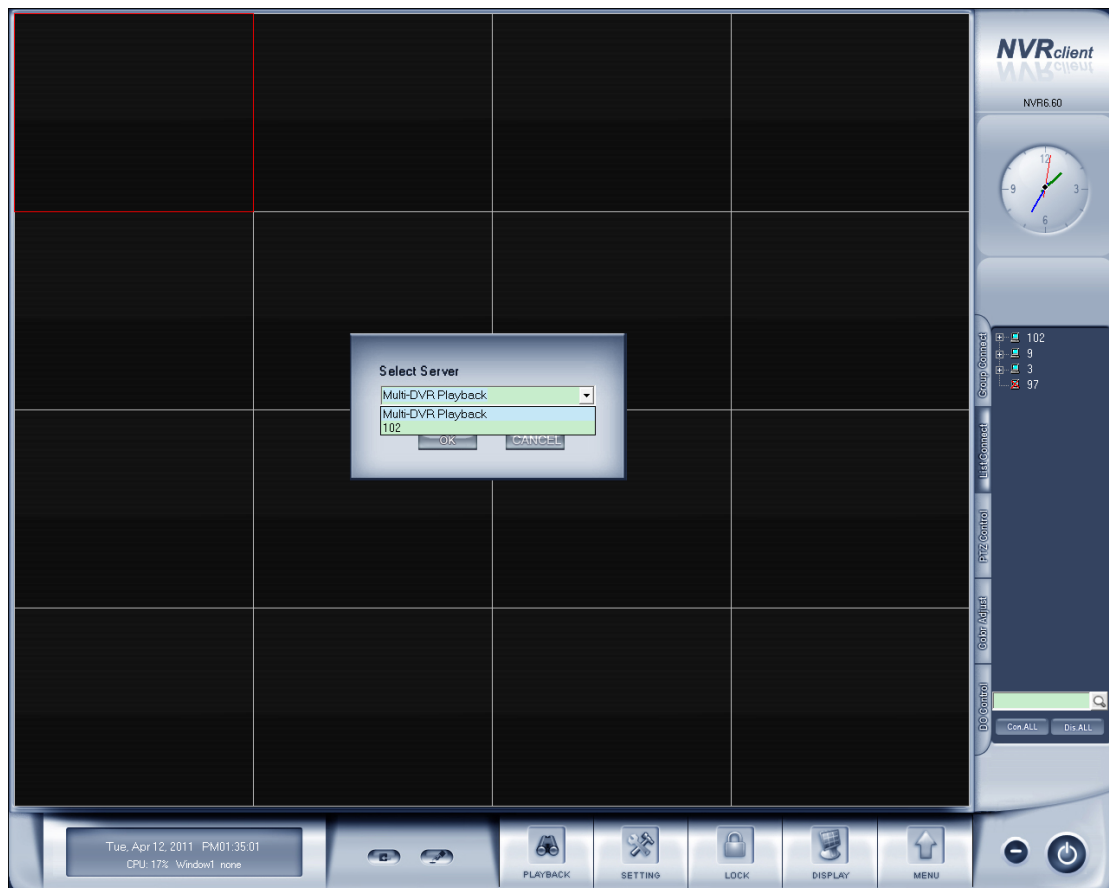
**【Copy to】** After finishing one channel, if you want to set any other channels' configuration as the same as this camera, you can select channel number from drop-down list, and press  button.

## Chapter5 Remote Search



Click  button and then this window pop up. This is new feature of our NVR V 5.60. It provides mutil-DVR playback and PC-DVR playback.

The mutil-DVR including recording data from EM-DVR, PC-DVR and DVS; On the contrary, PC-DVR is listed seperately.



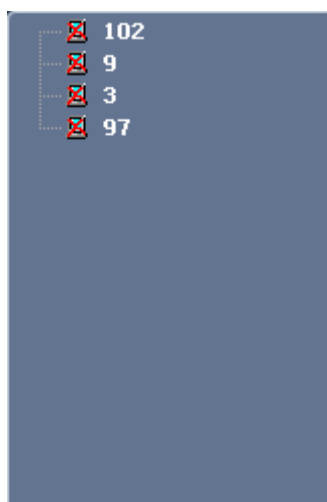
### 5.1 Mutil-Server playback

In the mutil-DVR playback interface, you will see as below:





When entering this interface successfully, all devices (including PC-DVR, EM-DVR, DVS with SD card) are not connected (by default). Shown as below:



If you want to connect any device, just double-click the device, and it will connect automatically. Similar for the other devices. More details about the related operation please refer to from 5.3 to 5.5.

## 5.2 PC-DVR playback

If you just want to playback video for a certain PC-DVR, click the button



and select the name of the PC-DVR, you will enter the interface as below:



The related operation is the same with before. For more details, please refer to contents from 5.3 to 5.5.

In this playback mode, we get several function those are popular among customers back, such as PS, AS and CP.

The two modes of playback can fulfill different requirements of different customers.


## 5.3 Steps of Playback

The operations are nearly the same with Local Playback. However, in

multi-server playback mode you should double click the server name in the server list to select one server before you select the date. Also, you can select one camera below the server name to select the server. Otherwise, you will not be able to select date.


And you can't select record type as in Local Playback. The record type icons below the time bar only show which record type you are playing back.

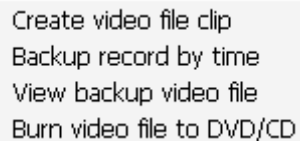
## 5.4 Play File and Related Operations

All buttons are nearly the same with Local Playback. However, you should not press  button before one server is selected.

Please refer to Chapter 3 for details.

## 5.5 Backup

Click button , there are four items to be selected.



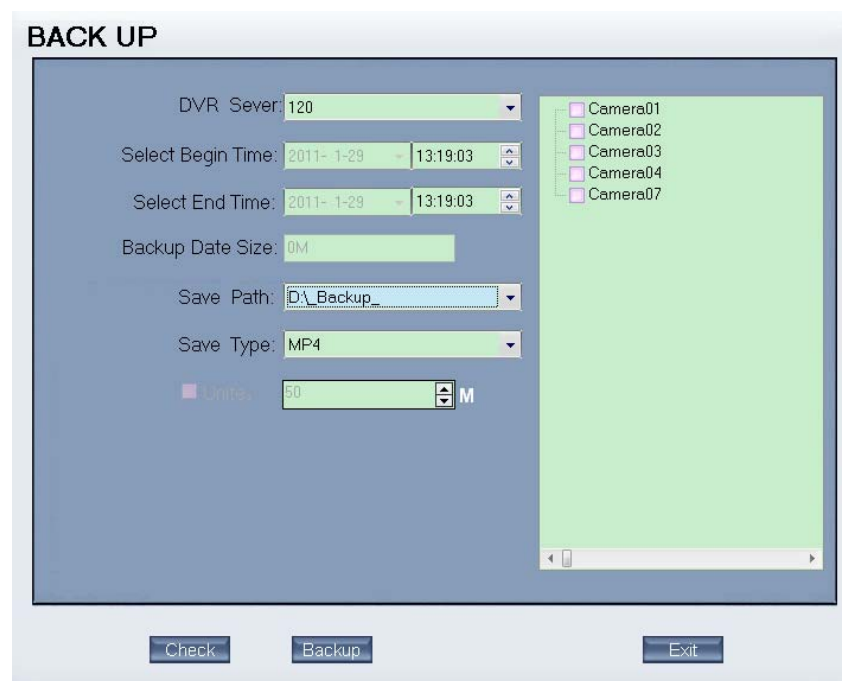
- Create video file clip
- Backup record by time
- View backup video file
- Burn video file to DVD/CD

### 5.5.1 Create File Clip



Please refer to 3.5.1 for details. The only difference is you should select one server from the drop-down list.

## 5.5.2 Backup Record by Time



It's nearly the same with 4.5.2 in DVR User Manual. The differences are as below:

You should select one server before backup.

“No Change” is named as “MP4”.

“AVI (H.264)” and “MSMPG4” is named as “AVI”.

### **5.5.3 View Backup Video File**

Please refer to 3.5.3 for details.

### **5.5.4 Burn Video File to DVD/CD**

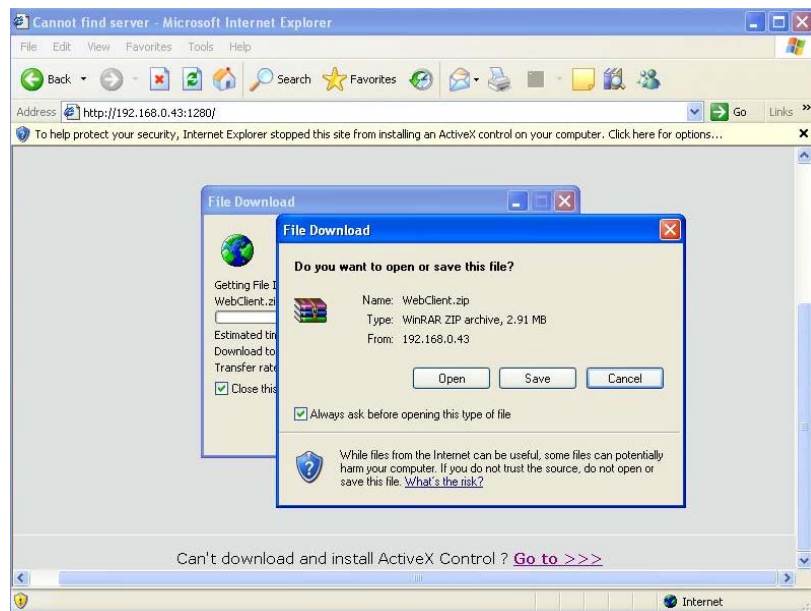
Please refer to 3.5.4 for details.

## Chapter6 IE client

The client user can look through video of DVR Client by Internet Explorer. The default web server port is 80. If it is changed to other port, user should add port number after IP address of NVR Client. E.g.: <http://192.168.0.119:1290>.

**Note:**

Webclient is updated from this version. If you can't download and install Activex automatically, you can download webclient.zip manually via clicking "Go to". Then, the following interface will be shown:



Save and install webclient on your PC, so that you can install ActiveX successfully later.

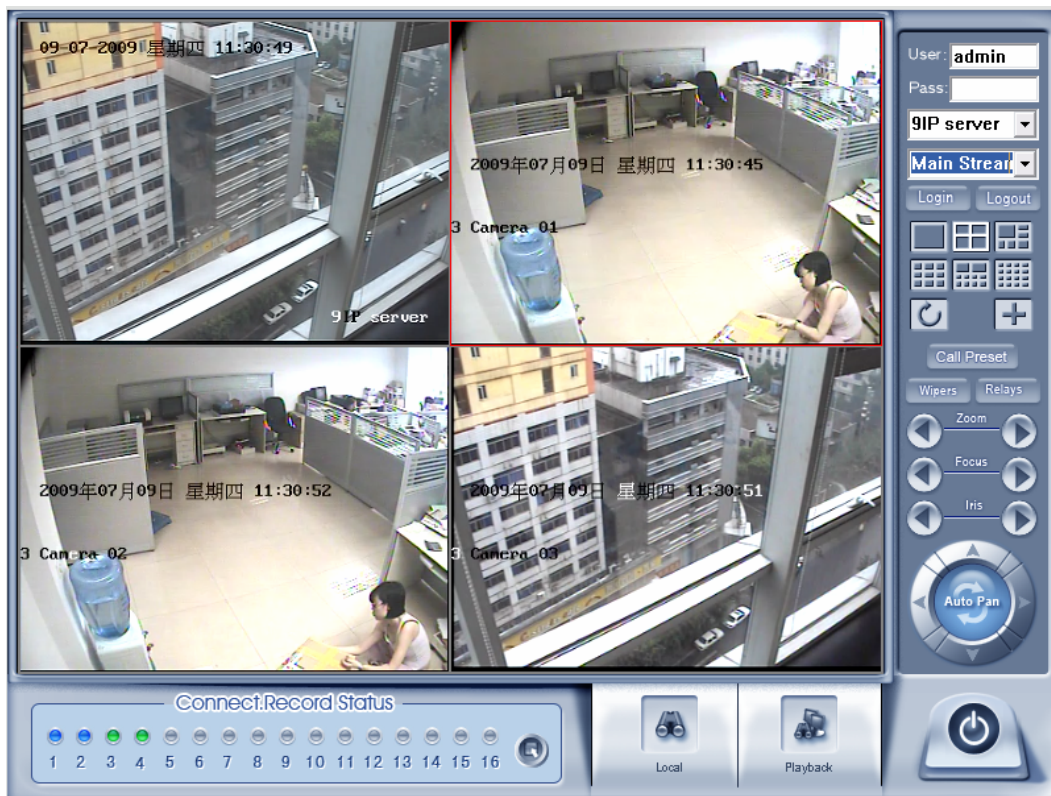
### 6.1 Functions of IE Client

1. Video display and video storage.
2. Audio input.
3. Searching and playback video image locally or remotely.
4. Control PTZ and speed demo remotely.

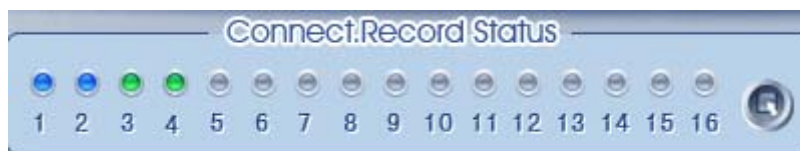
### 6.2 Main Interface

When you connect DVR Client successfully, you should input valid User ID and password in right up of the interface to acquire rights to play video and other operations.





### 6.2.1 Connect Record




This icon indicates the current connection and their record status:

Gray: Not connected.

Navy blue: Connected with no record.

Green: Connected with record.

You can change the record status by pressing corresponding number button or change status of all connections at the same time by pressing  button.

### 6.2.2 Partition Mode

You can set the partition mode from the drop-down list file on the right up of main interface. There are 1, 4, 6, 9, 10, 16 partition mode.

### 6.2.3 PTZ Control

Most functions of PTZ control are same as Client in [PTZ Control Panel](#).

### 6.2.4 Local & Remote Search

It will describe in [Local Search](#) and [Remote Search](#) in detail.

### 6.2.5 Quit Program



Press button to shut down the IE Client.

## 6.3 Local Search



Press button to enter local search.





## 1. Display Setup and Data Information

In this area, you can select display partition mode, date, video channel and its video file named according to time.

## 2. Playing Operation Area

In this area, you can operate video playing.

### (1). Video-playing Time Adjustment



Press and drag slider bar to adjust video-playing time.

### (2). Information Display Panel:

**Window4, Camera1, 00:00:03 / 00:00:04** Display current window name, camera name and record data information.

### (3). Playing Control Buttons



: Play, Pause, Stop

### (4). Single Frame Play



: Previous frame, next frame

### (5). Playing Speed Control



Slowly play



Fleetly play


## 6.4 Remote Search

Most functions and operations of Remote search are same as [Local Search](#); the different feature is that remote search added download feature.

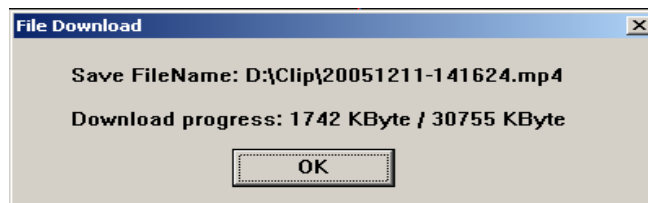


When you playback, you click down , system will save video of

current channel you selected, and after save finish one file, it will popup prompt to indicate its working.

Select one camera that has record data, open file list panel, select one record data package, and click  button, the selected data package will download fast.

13 : 36 : 2
13 : 48 : 9
13 : 49 : 44
13 : 51 : 36
14 : 32 : 2
14 : 32 : 22
14 : 34 : 38
14 : 40 : 14
14 : 46 : 28
15 : 2 : 46
15 : 13 : 2
15 : 19 : 49



**Note:**

When user use IE client to visit DVR Client, If connect successfully, there will appear four partition blue window. If connect unsuccessfully, the reasons possibly are:

The Web server port has been used by other programs.

Your computer didn't download the player plug normally. The reason may be the jurisdiction of your computer is too high, or your computer has plug filter.

# Chapter7 Appendix A: E-Map Function

## 7.1 Introduction

### 7.1.1 E-Map Introduction

E-Map is installed in NVR to deal with variety alarms, such as sensor alarm, motion detection alarm etc. If the setup is ok, when alarm happens, it will automatically switch to display video images of related alarm cameras immediately. User can click them to locate where the alarm be triggered out. And the corresponding names of camera will be displayed on screen.

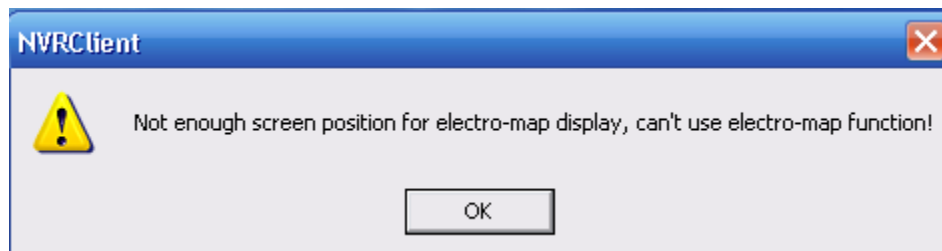
### 7.1.2 Corresponding Configuration of E-Map

Both of the single monitor and dual monitor support E-Map. There are some referenced configurations and steps of setups for the above 2 situations.

### 7.1.3 Single Monitor

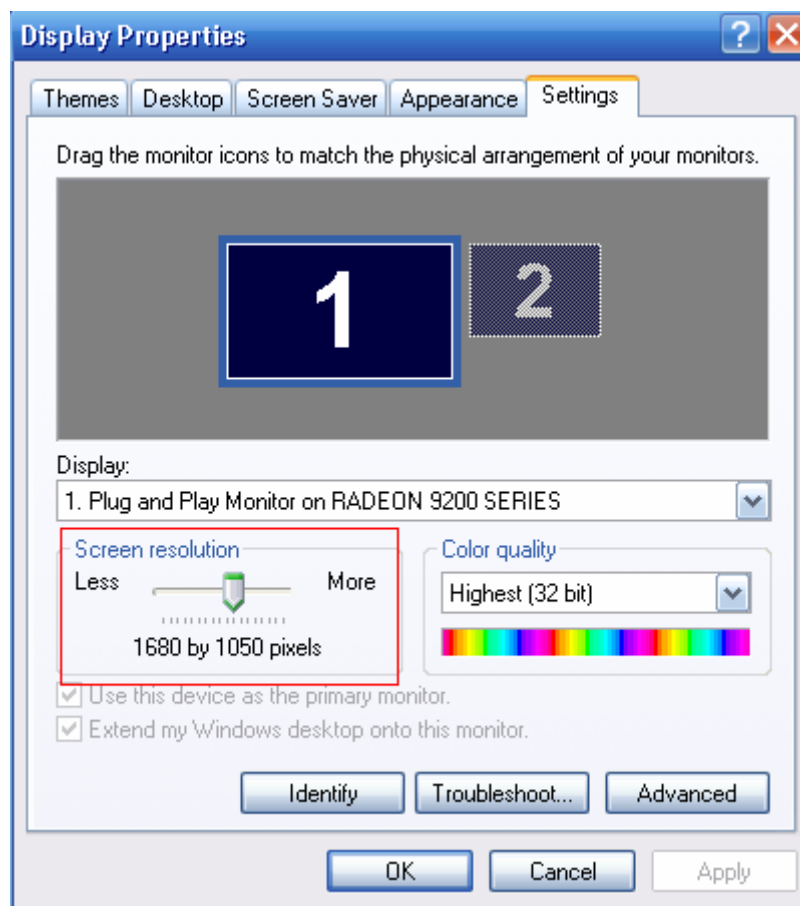
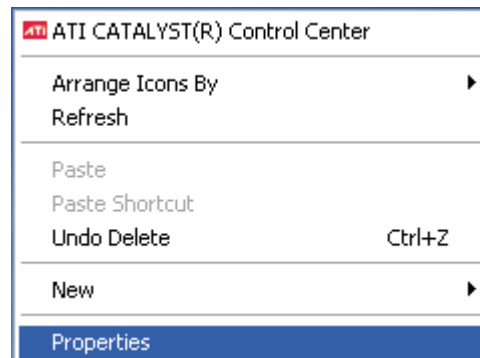
#### 1. Configurations

NVR display resolution supports **Auto, 1024\*768, 1280\*768, 1280\*1024, 1366\*768, 1440\*900, 1600\*900, 1680\*1050 and 1920\*1080**. That is to say, 1024\*768 is the least display resolution for NVR. So, when there is only one monitor, user must set its resolution more than 1024\*768. Otherwise, user can't use electro-map function. When user opens NVR, the following dialog box will be displayed on the screen if user has already enabled **Use electronic map** function in NVR **System Setup**:



#### 2. Steps of Setup

## (1). Set Resolution



**Note:**

The screen resolution must be more than 1024\*768 pixels if you want to use E-Map.

## (2). Add Server

User can add PC DVR and IP server into the system. If you don't add any

server in the system, you can't add any device in the map. The Add/Modify Server Information dialog box is showed as below:

**Add/Modify Server Information**

Server Name	192.168.0.102	Device Type	PC-Based DVR
IP Address	192.168.0.102	Default Stream Type	Main Stream
Connect Port	5100	IF Use Dns to Get IP	no
Login User ID	admin	Dns Server IP	
Login Pass		Dns Server Port	7100
Motion Alarm Play wav file	... Test		
Sensor Alarm Play wav file	... Test		

OK CANCEL

### (3). Set NVR Display Resolution

We suggest you set NVR Display Resolution as 1024\*768, so that there will be more space for electronic map.

**SYSTEM SETUP**

Max. Record channels	20	Display Resolution	1024*768
Network listen port	5300	Web Listen Port	80
Use electron map	Disable Stretched	Use Matrix Card	Disable Setup
Connect Server While Alarm	Disable	Data Stream Auto Adjust	Disable
Write Log While Alarm	Enable	Software Start Auto Connect	Disable
Instant Playback max time	480 sec	Auto Reconnect Time Interval	60 sec
Keyboard Use COM Port		Language	English
Window Split Mode	Normal Mode	Grab Picture Save to	D:\Grab
PC Decoder Function	Enable		

**CONNECT SERVER INFO**

IP Alias	IP Address	Disp. Port	Device Type	Cameras	Use DNS?
192.168.0.102	192.168.0.102	5100	PC-Based DVR	5	no
192.168.0.172	192.168.0.172	5050	DG Series EMDVR	16	no

Add Modify Delete

Server IP GroupSet RecordSet RightSet SAVE EXIT







The system can detect the dual monitors automatically, then you should select “Stretch Desktop 1 horizontally onto monitor” and the interface as below will be displayed:



The desktop area should be selected about double size of the one monitor. Now, the dual monitor is effective.

## (2). Extend



Also, you can choose “Extend Main onto monitor”.



The two monitors should be set as the same size. Otherwise, something may be wrong. It's shown as below.



**Note:**

1). If the old ATI display card doesn't support the “CATALYST Control Center”, you should download ATI Catalyst and install it ,then it can enter the setting interface in ATI catalyst control center;

2). If the length or width exceeds the scope that the screen can display, the monitor can't display normally. In other words, when you are setting the **Desktop area**, you should not only consider whether your display card supports or not but also your screen;

3). If you select "Stretch Desktop 1 horizontally onto monitor", you should correspondingly choose "Stretched" in NVR **system setup**.

**Note:**

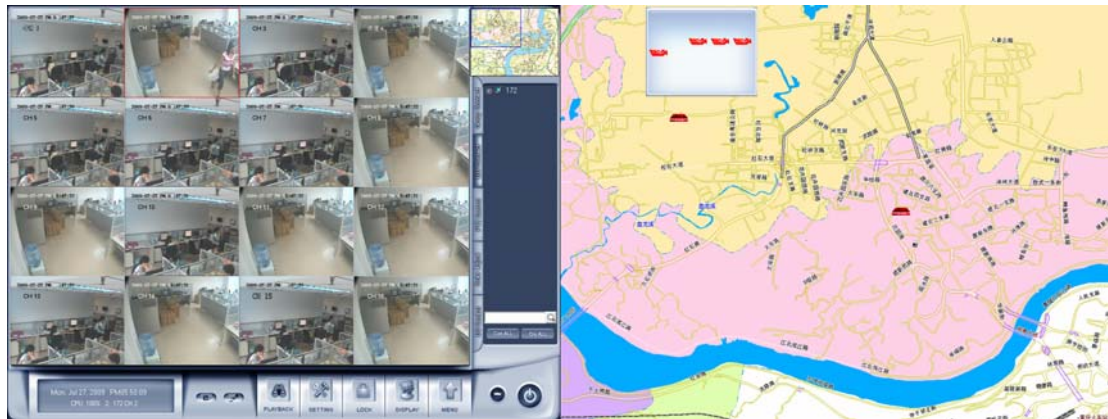
Stretch mode is not supported in win 7 OS.

4). If you select "Extend Main onto monitor", you should choose "Extended".

## 2. Steps of Setup

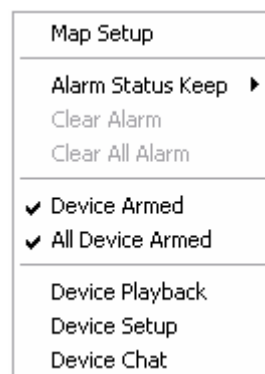
Also, user should add server, set NVR display resolution, open electronic map and restart NVR. The steps are the same as [Steps of Setup](#) for single monitor except the set of resolution. You can set **Display Resolution** as any one you like.

## 7.2 Main Interface



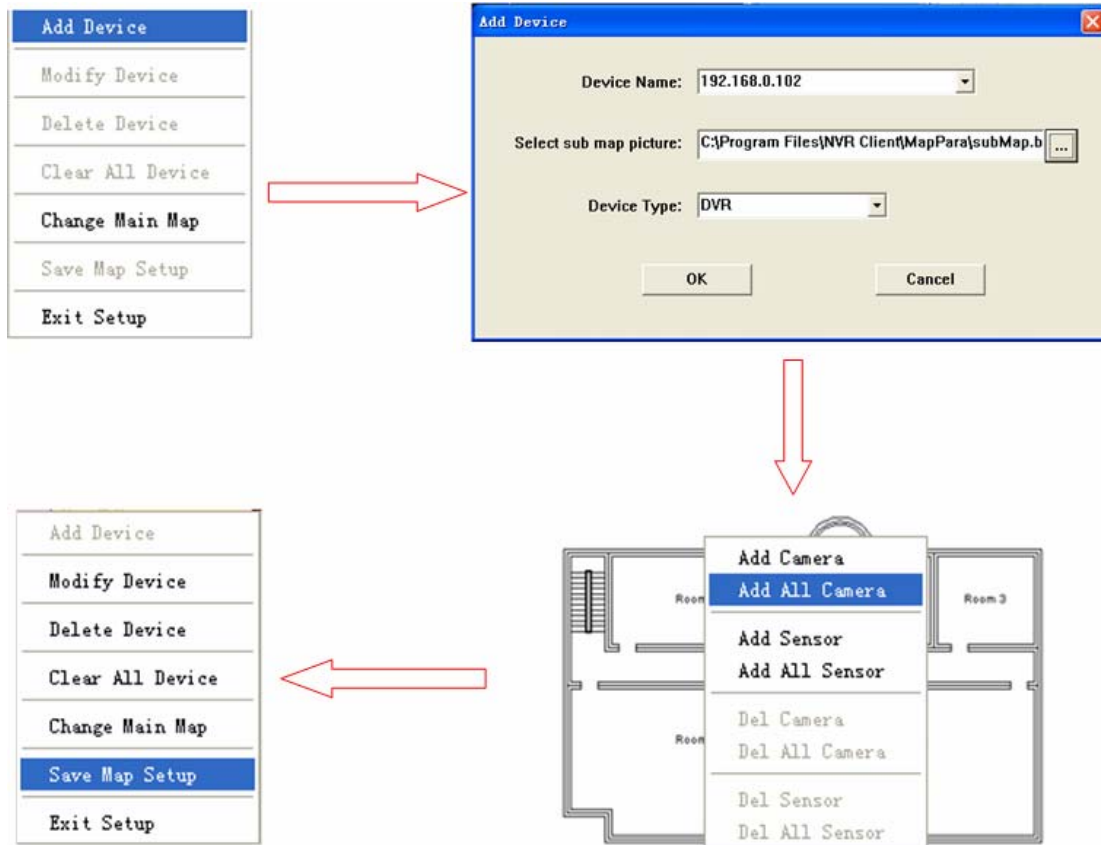
## 7.3 E-Map Menu

### 7.3.1 Map Setup





Click **Map Setup** to do the following operations.

### 1. Add Server and Related Operations



## (1). Add Device

Select device with its type and sub map (press  button to select a map with size from 160\*120 to 640\*480 pixels), and then press  button to finish adding a server. After that, the server icon will be displayed in the map area on the right screen. At the same time, it will be displayed in the compressed map.

### **Note:**

When you press a server icon in the map, the sub map and name of it will be displayed immediately. You can double-click sub map to close it;

You can only add the device that you have added in **system setup**. For example, here is a list of the connected server:

CONNECT SERVER INFO						
IP Alias	IP Address	Disp. Port	Device Type	Cameras	Use DNS?	
192.168.0.102	192.168.0.102	5100	PC-Based DVR	4	no	
192.168.0.172	192.168.0.172	5050	DG Series EMD...	16	no	
192.168.0.63	192.168.0.63	8000	NV Series IP	1	no	

Add

Modify

Delete

When you have all servers added into the map, you can't add more. It will popup a dialog box to inform you.

## (2). Add/Delete Camera or Sensor

After adding a server, the sub map of server will also be displayed. In the sub map, you can single-right-click to add camera or sensor.

After adding the cameras and sensors, the sub map will show as below:



You can drag the cameras and sensors to where you want in the sub map. When you click one camera or sensor, corresponding name will be displayed in the left bottom of the main map.

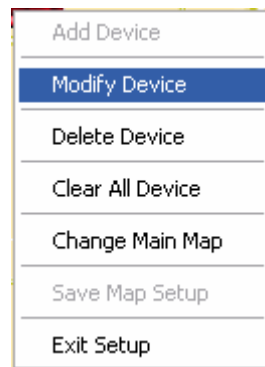
102  
102 camera01

102  
Sensor2

Then, you can single-right-click in the sub map area to delete camera or sensor.

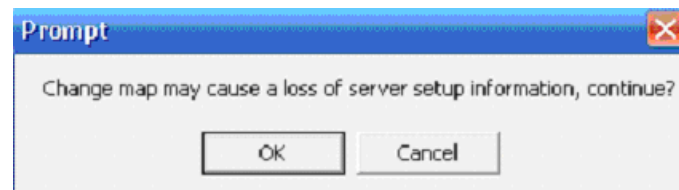
## (3). Modify/Delete device/Clear All Device

Single-right-click the device to choose Modify Device or Delete Device. Also, you can choose Clear All Device to delete all devices at a time.



#### (4). Change Main Map

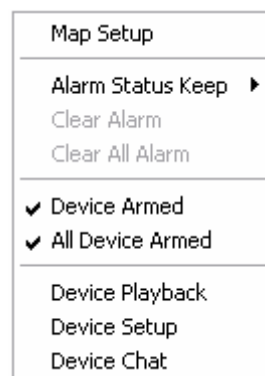
Click Change Main Map, a dialog box as below will be shown:



Click OK and choose a map from your files. Take care the map should be with size from 1024\*768 to 4096\*3072 pixels.

Then, you should choose **Save Map Setup** and **Exit Setup** to save and exit **Map Setup**.

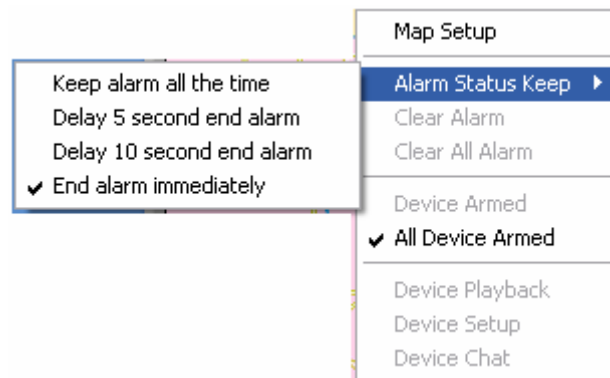
## 2. Device Armed



Click **Device Armed /All Devices Armed** (for more than one devices) to select alarm setup. Then, the device, including its cameras and sensors will turn golden yellow. When a camera detects a motion alarm, it will turn red and blink. At the same time, the video of the camera will be displayed automatically on the left screen if the setup in the server is suitable.

## 3. Alarm Keep

Click **Alarm Status Keep** to enter the submenu and select the action when an alarm is end. Selectable options are shown in the picture as below.



### (1). Keep Alarm All the Time

When the alarm is kept all the time, corresponding videos will also be kept on the screen.



User can choose **Clear Alarm** to clear the kept alarm for the device or click **Clear All Alarm** to clear alarm for all devices.

### (2). Delay 5/10 Seconds Before End Alarm

Alarm will be cleared after 5 or 10 seconds.

### (3). End Alarm Immediately

Videos of corresponding cameras will be cleared immediately when the alarm is end.

## 4. Quick Operations

### (1). Device Playback

This feature allow user to search server or camera quickly.

When you choose this function, the left screen will enter playback interface. For cameras that have no HDD, when you choose Device Playback function, it will enter playback interface too. But there is no record data.

## (2). Device Setup

Click this function to enter setup in NVR.

## (3). Device Chat

Click this function to chat with the device.

# 7.4 Connect Server while Alarm

This function will take effect only when electronic map is disabled.

The screenshot shows the 'SYSTEM SETUP' window with the following settings:

Setting	Value
Max. Record channels	20
Network listen port	5300
Use electron map	Disable
Connect Server While Alarm	Enable
Write Log While Alarm	Disable
Instant Playback max time	Disable
Keyboard Use COM Port	—
Window Split Mode	Normal Mode
PC Decoder Function	Disable
Display Resolution	Auto
Web Listen Port	80
Use Matrix Card	Disable
Data Stream Auto Adjust	Disable
Software Start Auto Connect	Disable
Auto Reconnect Time Interval	60 sec
Language	English
Grab Picture Save to	D:\Grab
PDA Connect Port	5101

After you enable this function, videos of corresponding cameras will be displayed on the left screen when alarms are triggered out. Of course, you should confirm your setup in the device is suitable first.



# Chapter8 Appendix B: PC Decoder Function

## 8.1 Introduction

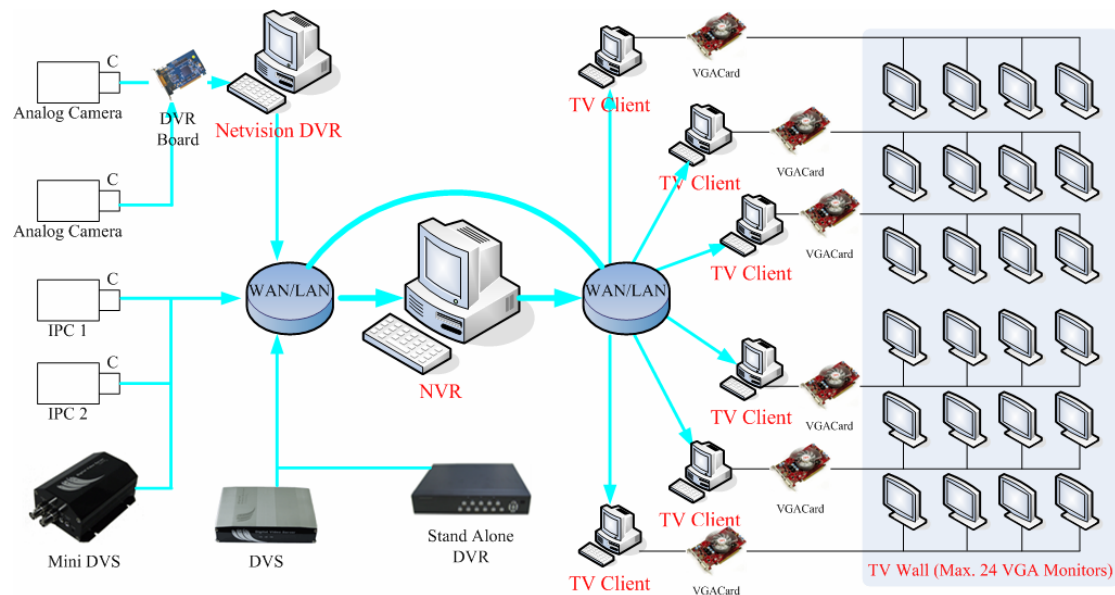
### 8.1.1 PC Decoder Introduction

PC Decoder, a pure IP based network Decoding & Matrix platform, is integrated to support multi-monitor for TV wall function. By using this platform, user can decode all IP videos, such as video from PC-DVR, stand alone DVR, DVS and IP cameras (any brands supported by our software).

PC Decoder is made up of server end and client end. Its sever is added into NVR to support centralized management, including setting connection port, setting matrix output and display for each TV client and controlling PTZ etc. Its client ends run on independent computers.

User can connect as many as 24 monitors to TV clients. Of course, it needs your video card in TV client system supports multi-monitor when you want to connect more than one monitors on a PC.

The frame diagram of application is as below:



### 8.1.2 Preparation

## 1. Installation

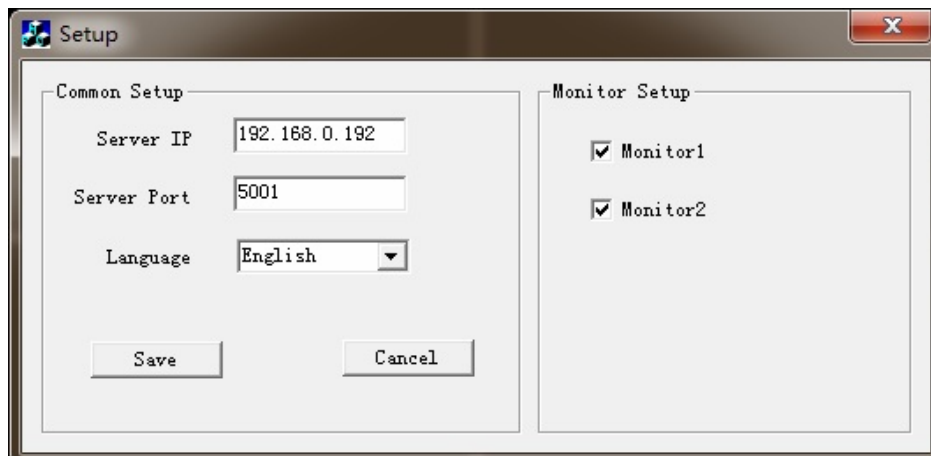
You have to install NVR client (the sever end of PC Decoder) and TV client (the client end of PC Decoder) on different PC.

The way to install NVR is the same as before. So we will only introduce how to install TV client here.



Double click this icon to run the TV client installation program.

And then, follow the prompt to continue the installation. When the GUI shown as below displayed, fill the NVR IP in "Server IP". Take "192.168.0.192" as example. Select your desired language between "English" and "Chinese". "Server Port" here should be the same with "Listen Port" in NVR **PC Decoder Setup**. It's 5001 by default. Then, press "Save" to finish the information filling. At last, press "Finish" to complete the installation.



When it's done, this icon will be displayed on the desktop. Double click it to run the program.

Also, you can fill the server IP later after you finished the installation.

When you want to change the sever IP to others, you have to run "TVsetup.exe" in installed folder to change the IP.

## 2. Multi-monitor Setup

Please refer to 7.1.4 for details.

So far, the operations at TV client side are done.

By default, there will be four black windows on each monitor when you run

TV client the first time.

## 8.2 Setup

All the settings can be done in NVR client, the sever end of PC Decoder. Client end is mainly used to view videos.

First of all, user has to enable **PC Decoder Function** in NVR system setup. Shown as below:

[illegible]

### 8.2.1 Monitor Setup

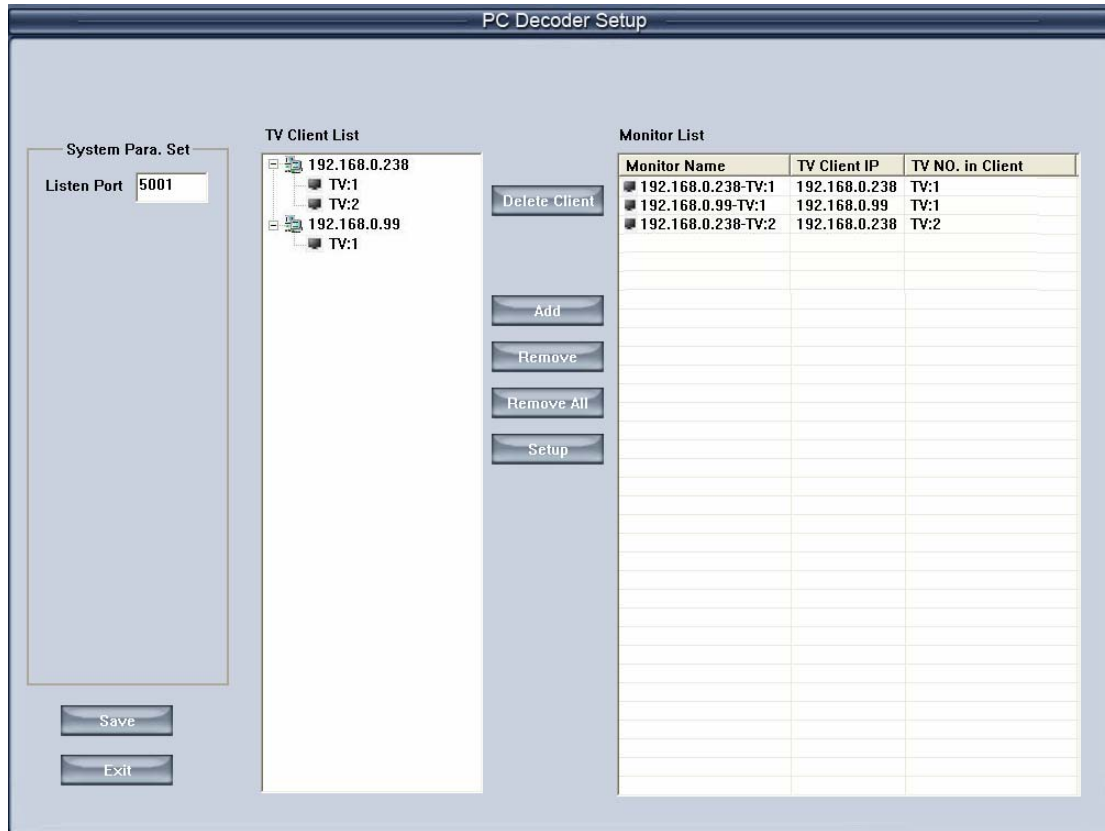
Single-Right-Click in any window, the menu as below will be displayed. Click “PC Decoder Function”→ “PC Decoder Setup” to enter ***PC Decoder Setup***.

Full screen display	
Instant playback ▶	
End playback	
Image Quality ▶	
Frame rate ▶	
Resolution ▶	
IP Video Zoom in	
Switch to Sub Stream	
Audio Chat	
PC DVR Motion Setup	
Views Manual Adjust	PC Decoder Setup
Device Abnormity Message	Open All Monitor
About IP Register	Close All Monitor
PC Decoder Function ▶	192.168.0.99-TV:1

[illegible]

The IP “192.168.0.99” here is one of the PC you installed TV client on. After you filled the NVR IP “192.168.0.192” (the sever end, mentioned before) in login interface when running TV client, its IP will be displayed here automatically. Click “Add” button to add it to the Monitor List so that you can setup it later.

“TV: 1” is the main monitor in TV client. When there are dual monitors, the second monitor will be shown as “TV: 2” here.



## 1. Group Setup

Double click one TV monitor in the “Active Monitor List” to enter “Monitor Setup” displayed as below.

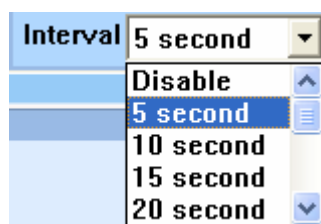
You can set as many as 16 groups for each TV monitor.



## 2. Loop Setup

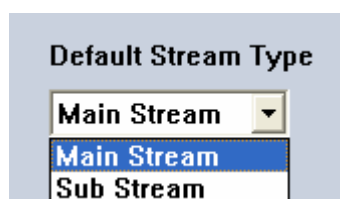
[illegible]

95

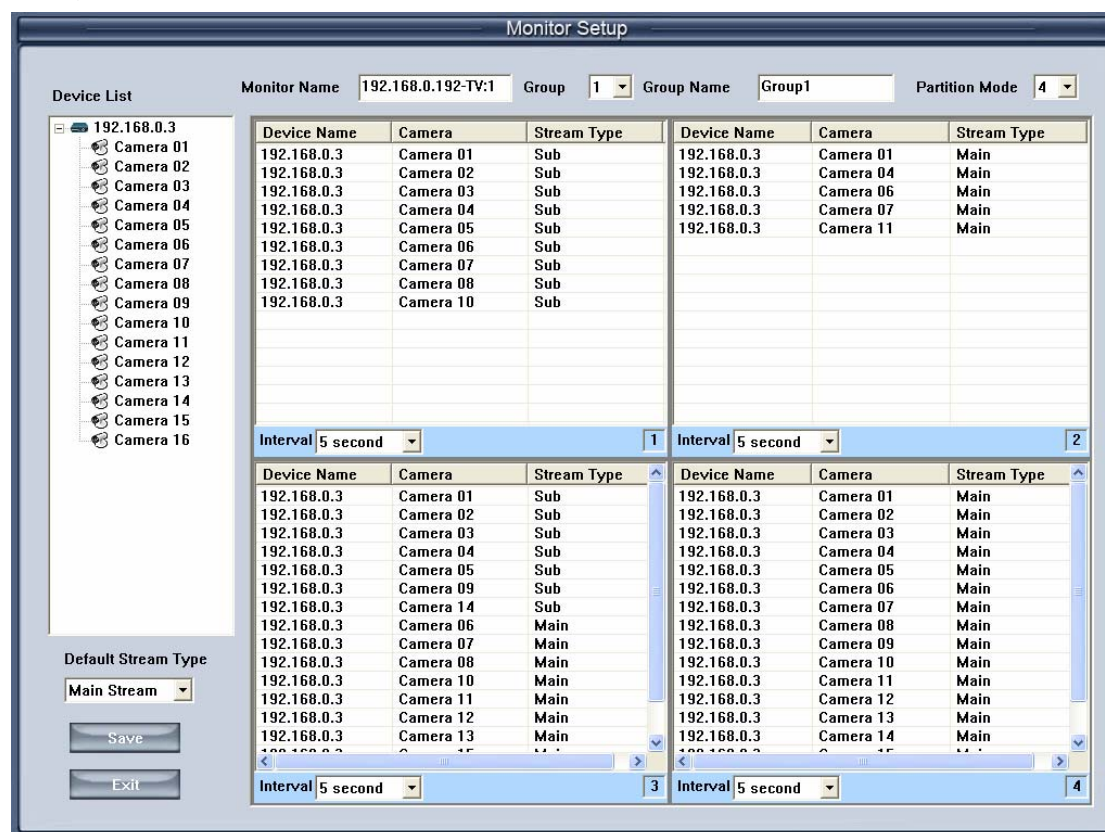


When all the settings are done, don't forget to click "Save" button on the left. You should click "Save" in both "Monitor Setup" and "PC Decoder Setup" interface. Then, click "Exit" to exit setup.

### 3. Default Stream Type Setup



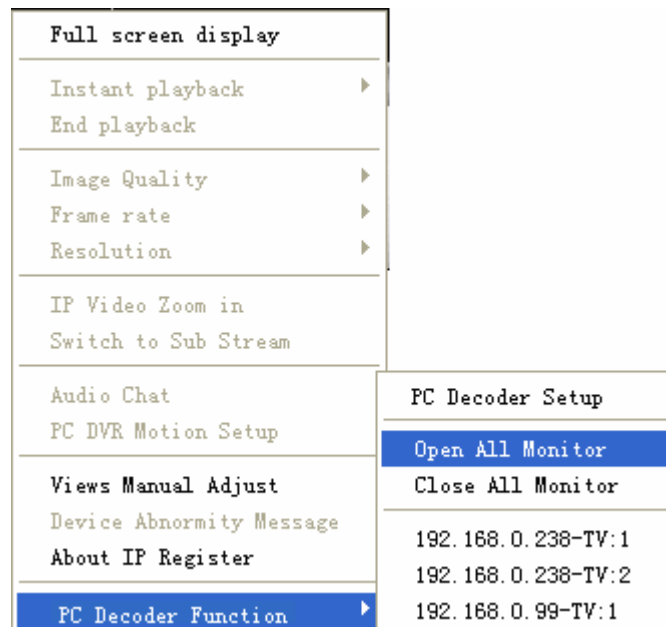
Select a default stream type from "Main Stream" and "Sub Stream". If main stream is selected, then, all the cameras you drag to the window will be displayed as main stream until you select "Sub Stream" from the list. If you don't want to set main stream or sub stream for your cameras one by one, this is a good choice.





## 8.3 Monitor Control

### 8.3.1 Monitor Status Display



Select “Open All Monitor” in right click menu to view all the monitors connected in the system. You can drag them to anywhere. The names of current display cameras on TV client will be shown in the monitor window.

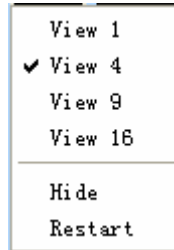
Also, you can open only one monitor at a time via selecting it in the monitor list below “Close All Monitor”. For example, click “192.168.0.99-TV: 1” to open the third monitor in the list shown as above.

You can adjust the view mode, select cameras or groups to display and control PTZ on the monitor you opened just now. For more details, please refer to 8.3.2.

### 8.3.2 Monitor Control

#### 1. View Adjust

Click  on monitor to enter this menu:




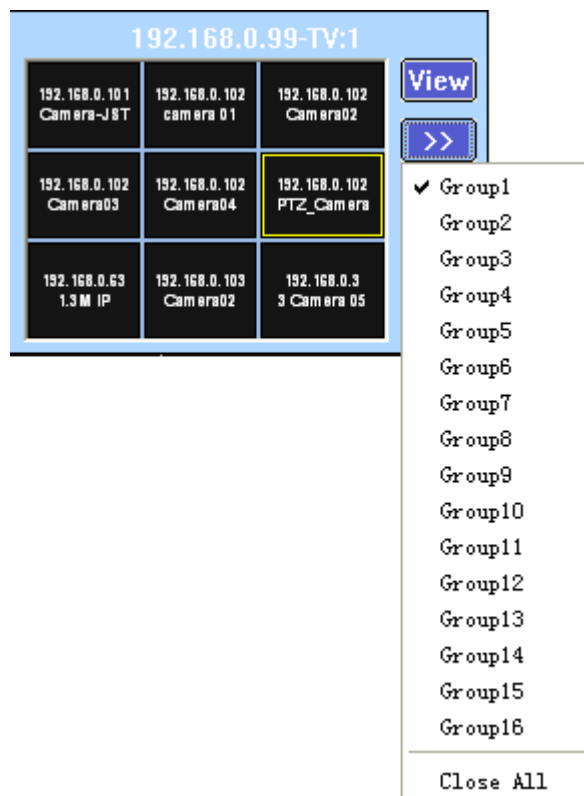
User can adjust the window split mode to 1, 4, 9 or 16 views mode.

When you select “Hide”, the windows on TV client will be hidden. Also, select “Show” to show up the TV client windows.

When you select “Restart”, TV client will stand by.

## 2. Display Groups

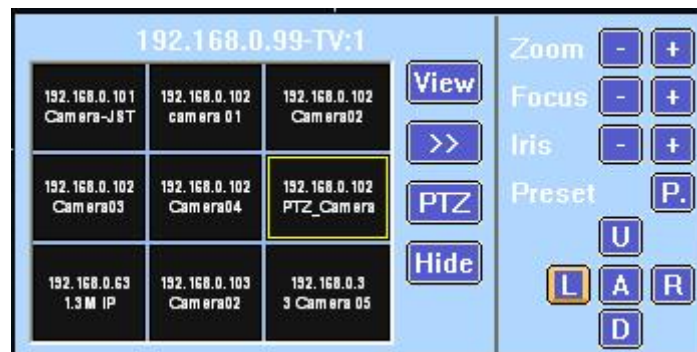
Click  on monitor window to open the group name list. Select one group to display on the TV client. And the corresponding cameras' names will be displayed in the monitor window.



When you select “Close All”, you will close all the groups. At that time, there will be no camera displayed on TV client. And the monitor windows will turn to black. But you can drag cameras from “List Connect” panel to monitor window to display. Also, you can select a group name again to display.

### 3. PTZ Control

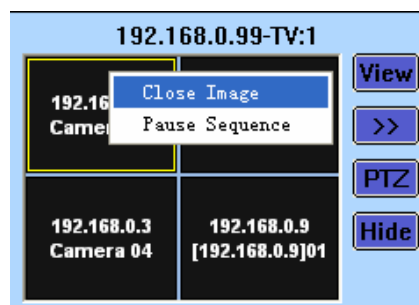
Click  on monitor window to enter PTZ control menu.



PTZ can only be controlled when PTZ camera is selected. It's nearly the same with the operations on PTZ control panel. But you can only call the preset you have set. You can't set the preset here.

When there are more than one cameras displayed in a window, you can't control PTZ. But you can drag PTZ camera to this window to stop loop in the window and then control PTZ.

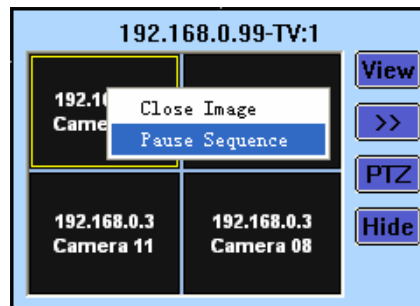
### 4. Close Image



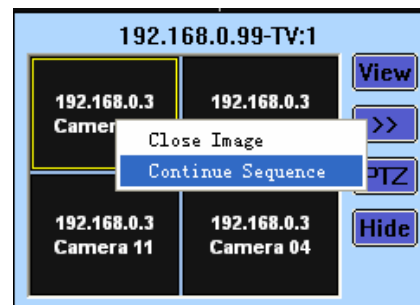
Single-right-click in any window you like and then press "Close Image" to not display any video in that window. Of course, even there are more than cameras loop in that window, they will all be closed.

### 5. Pause/Continue Sequence

Single-right-click in any window you like and then press "Pause Sequence" to stop loop in that window.



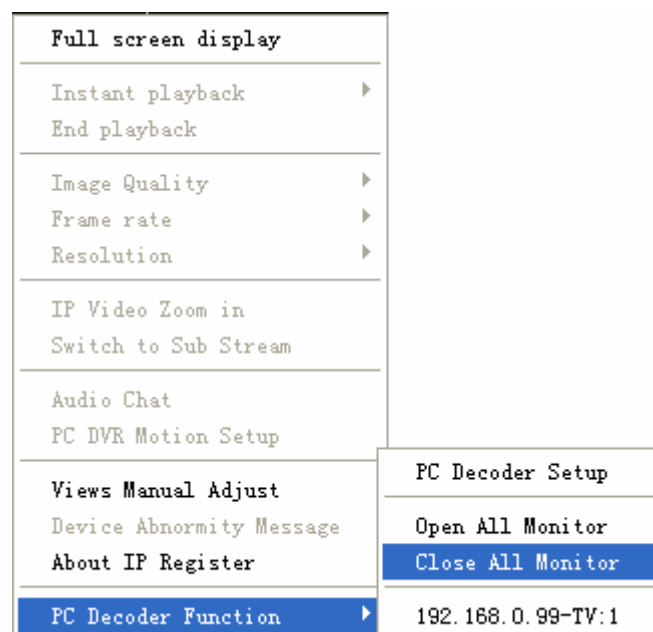
After “Pause Sequence” is pressed, it will turn to “Continue Sequence” when you enter the menu again. Press it to continue the loop in the window.



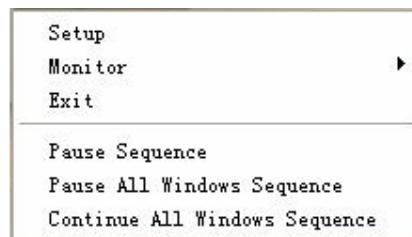
## 6. Close/Hide Monitor

Click **Hide** on monitor window to hide the window when you finished the settings.

Also, you can select “Close All Monitor” in right click menu to close all the monitors you opened.

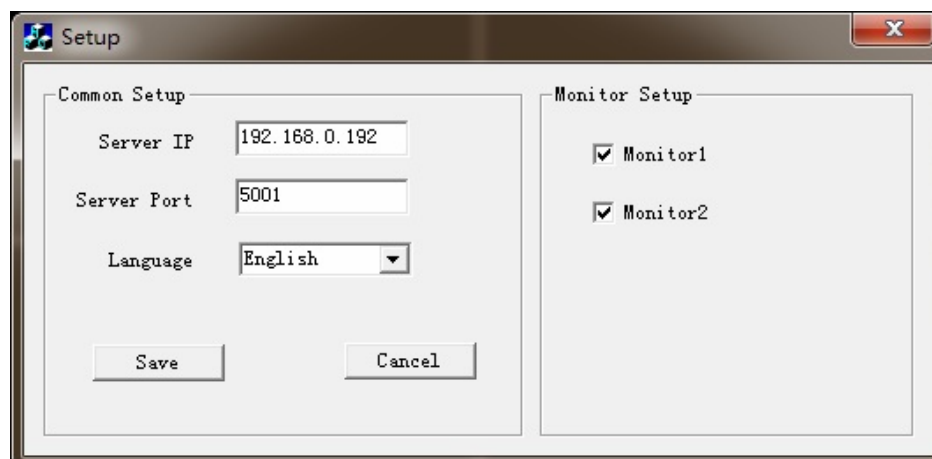


## 8.4 Operations on TV Client



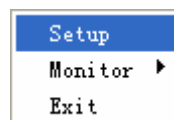
### 8.4.1 Setup

Click “Setup” to enter the interface shown as below. Please refer to 8.1.2 for details.



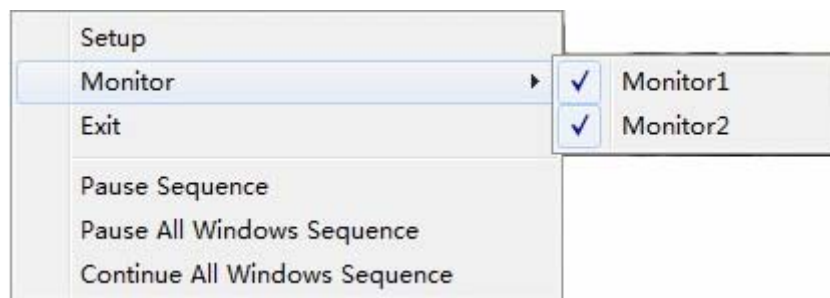
All the monitors connected to the TV client will be listed here. They are all checked as default so that they can be displayed. If you want to hide one monitor, don't check it please. Refer to 1.4.2 for details.

Also, you can single-right-click the small icon on the task bar and then select “Setup” to enter the setup interface.



### 8.4.2 Monitor Control

#### 1. Display/Hide the Monitor



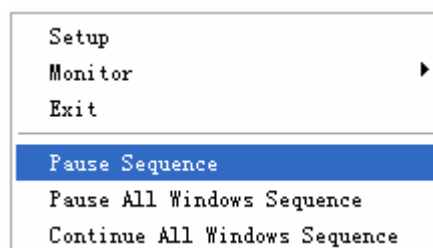
All the monitors connected on the TV client PC will be listed there if you click “Monitor”. Select one monitor to hide it. If you don’t check “Monitor 2” here, then, the monitors will turn to like this (The second monitor displays the desktop only.):



If you want to display it again, single-right-click the small icon on the task bar and then check it from the monitor list.



## 2. Pause/Continue Sequence



Pause/Continue Sequence will only pause or continue the loop in the window you selected.

Pause/Continue All Windows Sequence will pause or continue loop all

windows in the display group.

### **3. Exit**

Click “Exit” on the single-right-click menu to exit the monitor.

Also, you can single-right-click the small icon on the task bar and then select “Exit” to exit the monitor.