

POS Machine Connection Guide

For

HVR Server v10.x

POS-DVR surveillance system is a professional surveillance integrated with POS system. By bringing video and POS transaction data together, the POS-DVR surveillance system provides visual text information to reduce shrinkage and prevent asset from losing.

HVR System can integrate any POS devices that send plain text data based on ASCII code through serial port (RS-232-C) or network (TCP/IP).

When text information was sent to HVR through COM port or network, user can set filter rule according to the data information. After correct settings, HVR will overlay text information over the video image.

1. Connection

HVR System supports two methods to receive the data from POS system: Serial port and network. Result from that, POS system can send data through serial port or network directly, or the combination of them by using converter.

1.1 Direct COM port connection

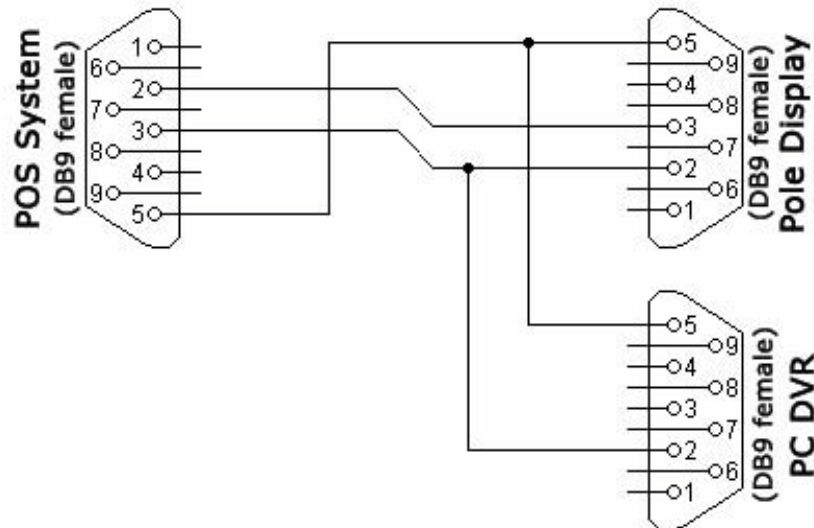
For direct COM port connection, we recommend user send the data for pole display to our POS system, since it is real time and will not send much data at a time, which will cause the difficulty to read the fast scroll text over the video. And user should use cross-line cable to connect two ends.

If the POS system support copying the data for pole display to another COM port, user can connect that COM port with the HVR directly.

If the POS system does not support copying the data for pole display to another COM port, user can make a spy monitor cable to divide the data from POS to pole display (RS-232-C serial port connection) to two terminals, one for pole display and the other for HVR.

Note: before you make the DIY spy cable, please consult your POS supplier to be sure the pin definition of the RS-232-C cable between POS System and Pole Display.

A. Half duplex RS232 spy cable without handshaking

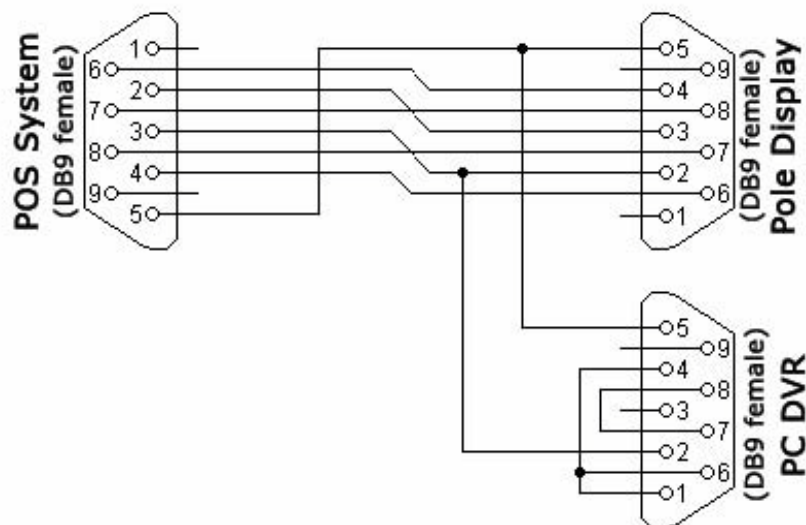


* Since we just need the data from POS system to Pole display, so we just connect the pin 3(Transmit data) of POS system with pin 2 (Receive data) of HVR. Next is the same.

HVR	Function
3 (POS system) 2*	Tx Rx
5 (POS system) 5	Signal Ground

B. Half duplex RS232 spy cable with handshaking

Our HVR does not need any flow controls for direct COM port, including software and hardware flow control. If the POS system need flow control, user should do some changes as below:



For more detailed information, please refer to: <http://www.lammertbies.nl/comm/cable/RS-232.html>.

Since serial cable can only be used in near distance, when the distance is too far, use can use direct network connection or RS232 to network connection:

1.2 RS232 to network connection

For this connection, we supply a converter for client to convert RS232 to network: NC6XX series IO-Server.

	Function
3 (POS system) 2	Tx Rx
5 (POS system) 5	Signal Ground
1 + 4 + 6	DTR CD + DSR
7 + 8	RTS CTS

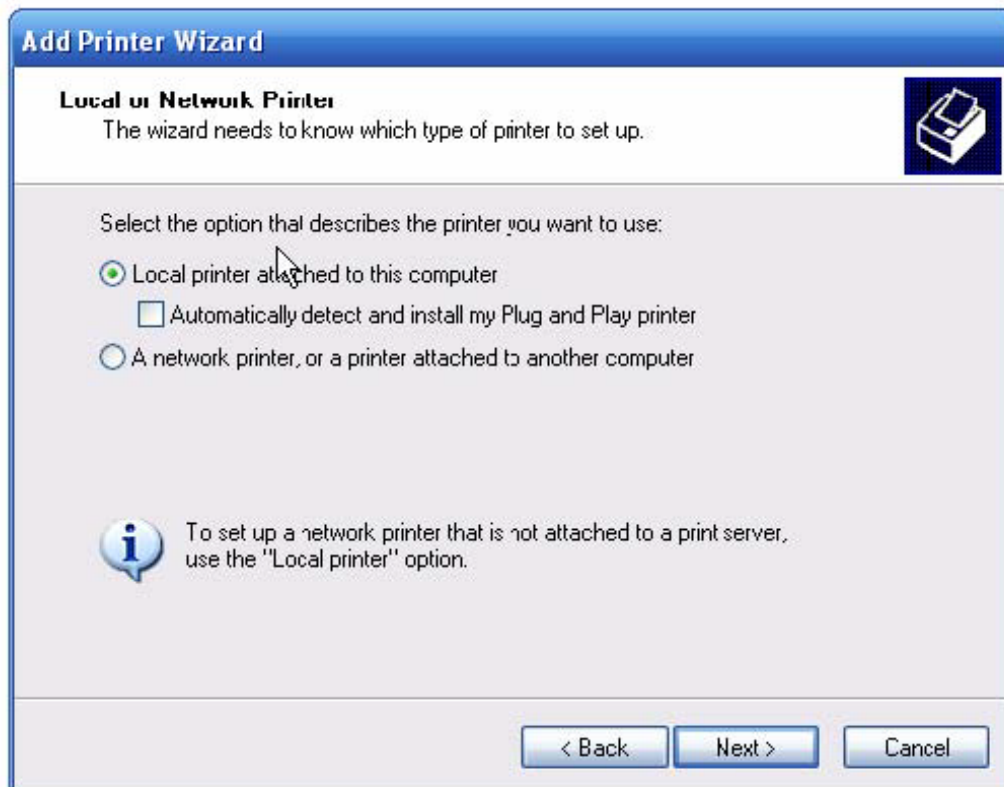
The IO server adopts RJ45 standard RS-232-C interface, for the conversion between DB9 and RJ45, please refer to corresponding manual, here take NC602 for instance:

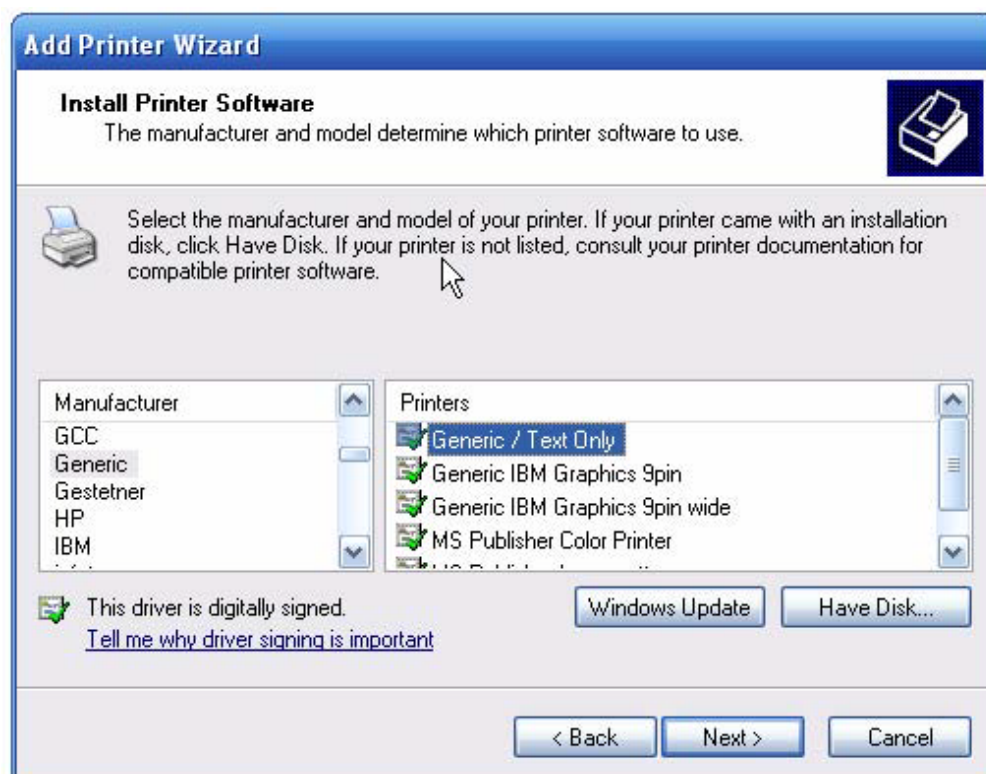
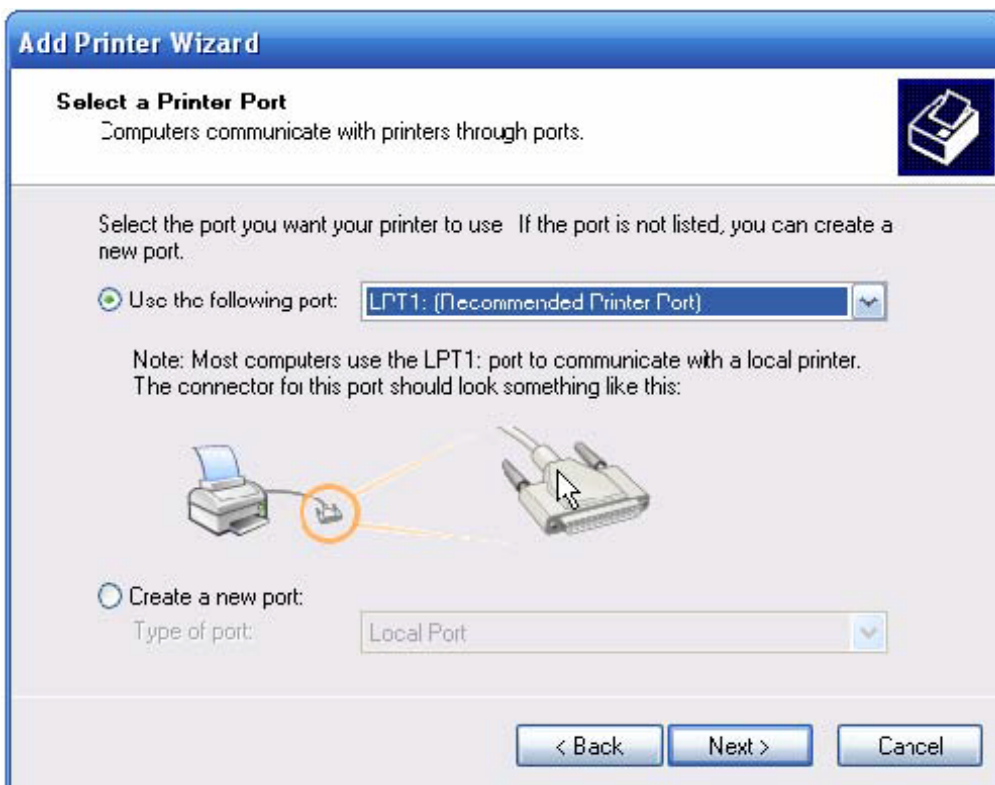
1.3 Direct network connection

Generally speaking, user use network printer for direct network connection, since it will cause difficulty to read the text over video, we do not recommend user to use this connection.

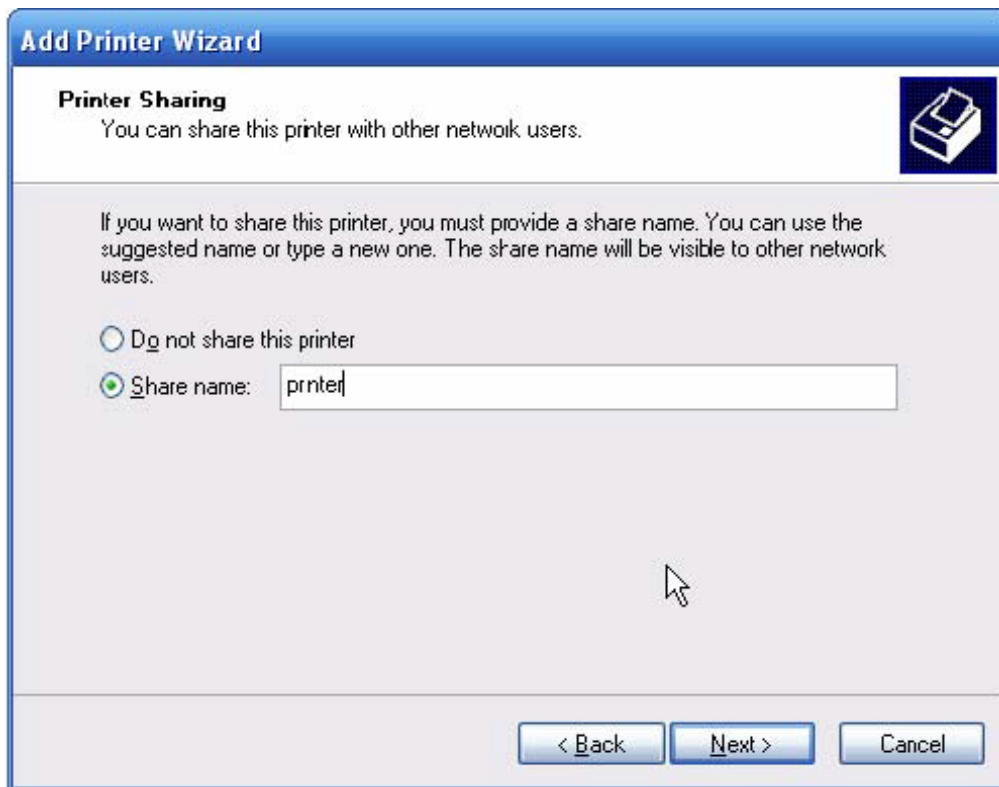
A. Install Generic / Text Only printer driver on the PC you run HVR (such as 192.168.0.102)

	POS System (DB9)
1 TXD	2 RXD
2 RXD	3 TXD
3 RTS	8 CTS
4 CTS	7 RTS
5 DSR	4 DTR
6 GND	5 GND
7 DTR	6 DSR
8 DCD	1 DCD





Select "Generic" / Generic / Text Only

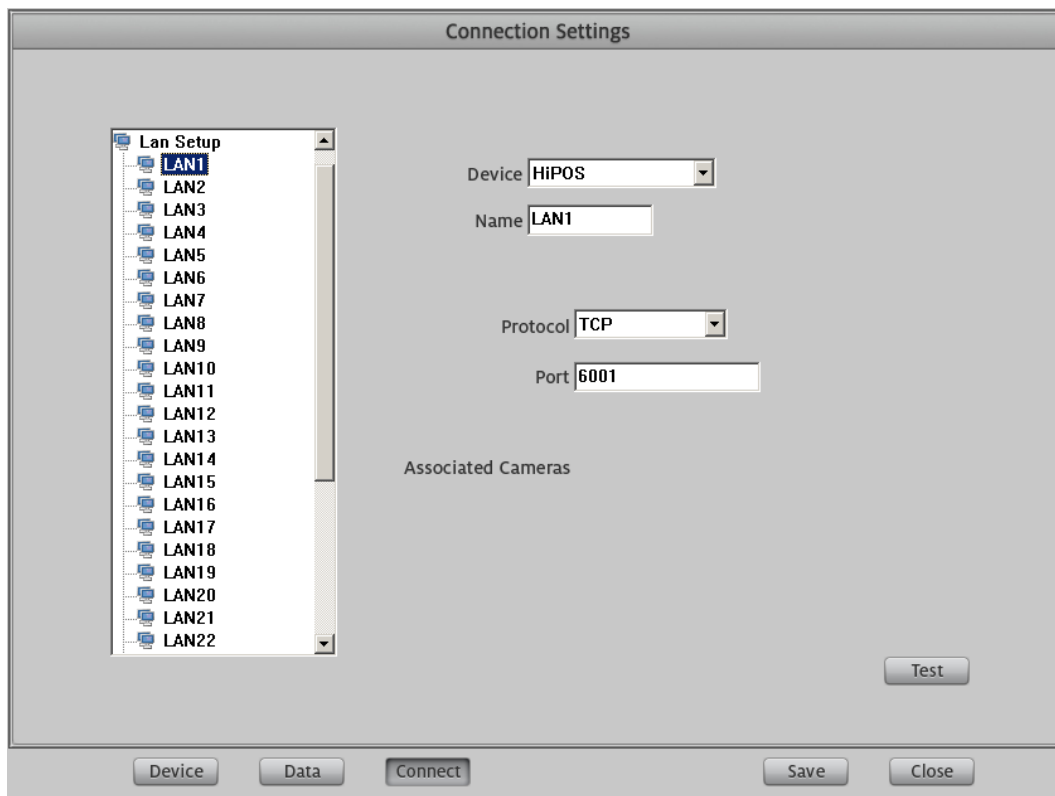


Share the “printer”

Now you can think the HVR as a shared network printer.



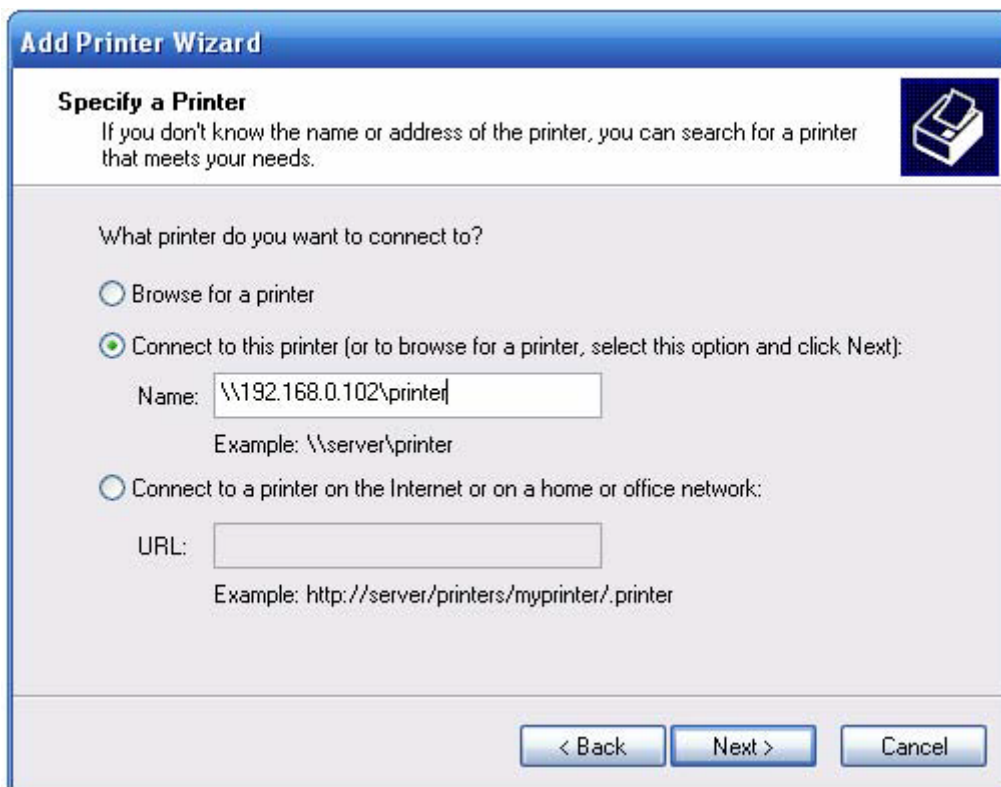
B. Set a port (such as 6001) to get text information from POS under POS setup interface in HVR.



Set the port 6001 in HVR to receive the text information from POS

C. Add the printer on the PC that run HVR as a network printer for POS (such as 192.168.0.123) and set it as the default printer for POS.





Add Printer Wizard

Specify a Printer
If you don't know the name or address of the printer, you can search for a printer that meets your needs.

What printer do you want to connect to?

☐ Browse for a printer

☒ Connect to this printer (or to browse for a printer, select this option and click Next):

Name:

Example: \\server\printer

☐ Connect to a printer on the Internet or on a home or office network:

URL:

Example: http://server/printers/myprinter/.printer

< Back Next > Cancel

Add a network printer



Add Printer Wizard

Default Printer
Your computer will always send documents to the default printer unless you specify otherwise.

Do you want to use this printer as the default printer?

☒ Yes

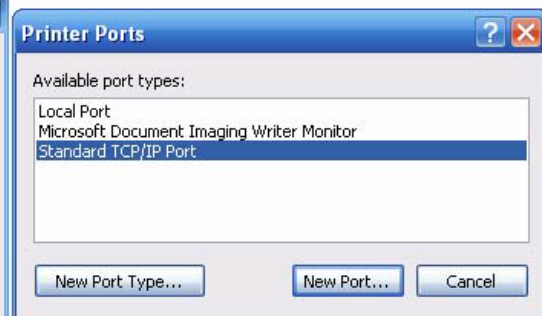
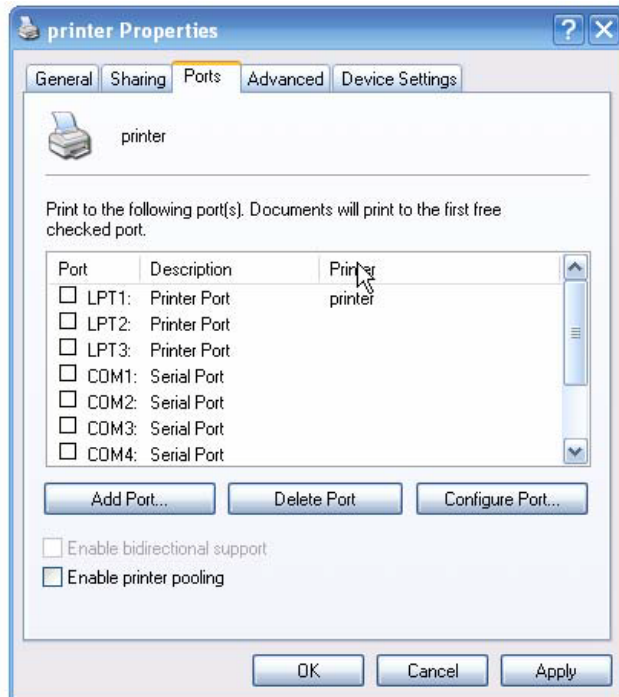
☐ No

< Back Next > Cancel

Add the printer shared in 192.168.0.102 (HVR)

Set the shared printer in 192.168.0.102 as the default printer

D. Add a standard TCP/IP Port for default printer of POS:



Add Standard TCP/IP Printer Port Wizard

Add Port
For which device do you want to add a port?

Enter the Printer Name or IP address, and a port name for the desired device.

Printer Name or IP Address: 192.168.0.102

Port Name: IP_192.168.0.102

< Back Next > Cancel

Add Standard TCP/IP Port

Add Standard TCP/IP Printer Port Wizard

Additional Port Information Required
The device could not be identified.

The detected device is of unknown type. Be sure that:

1. The device is properly configured.
2. The address on the previous page is correct.

Either correct the address and perform another search on the network by returning to the previous wizard page or select the device type if you are sure the address is correct.

Device Type

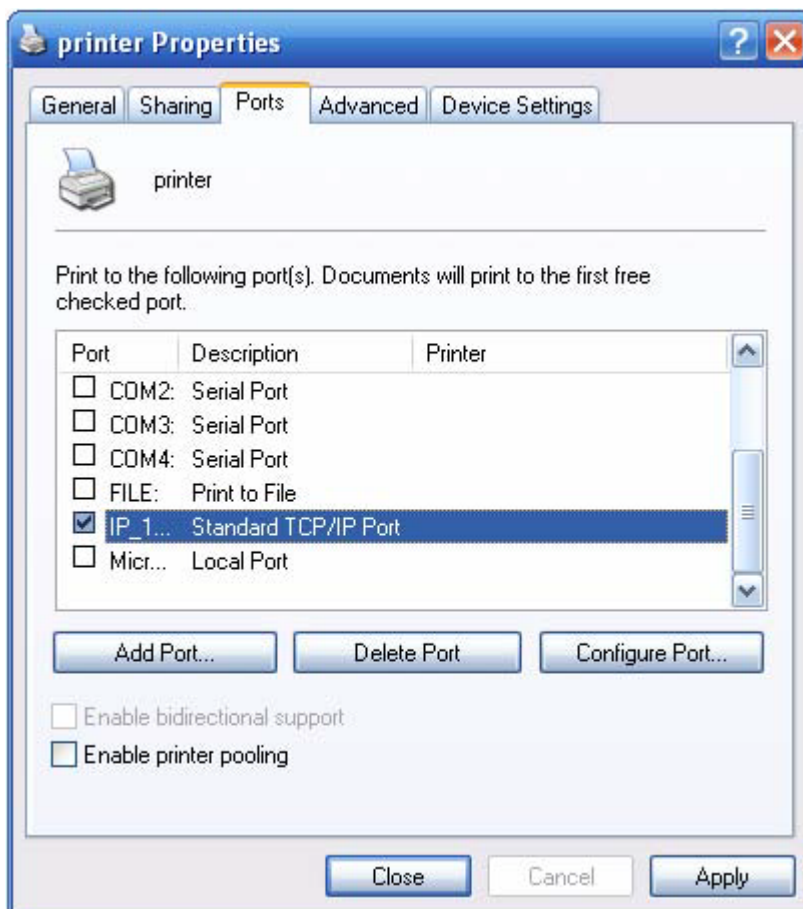
☒ Standard Generic Network Card

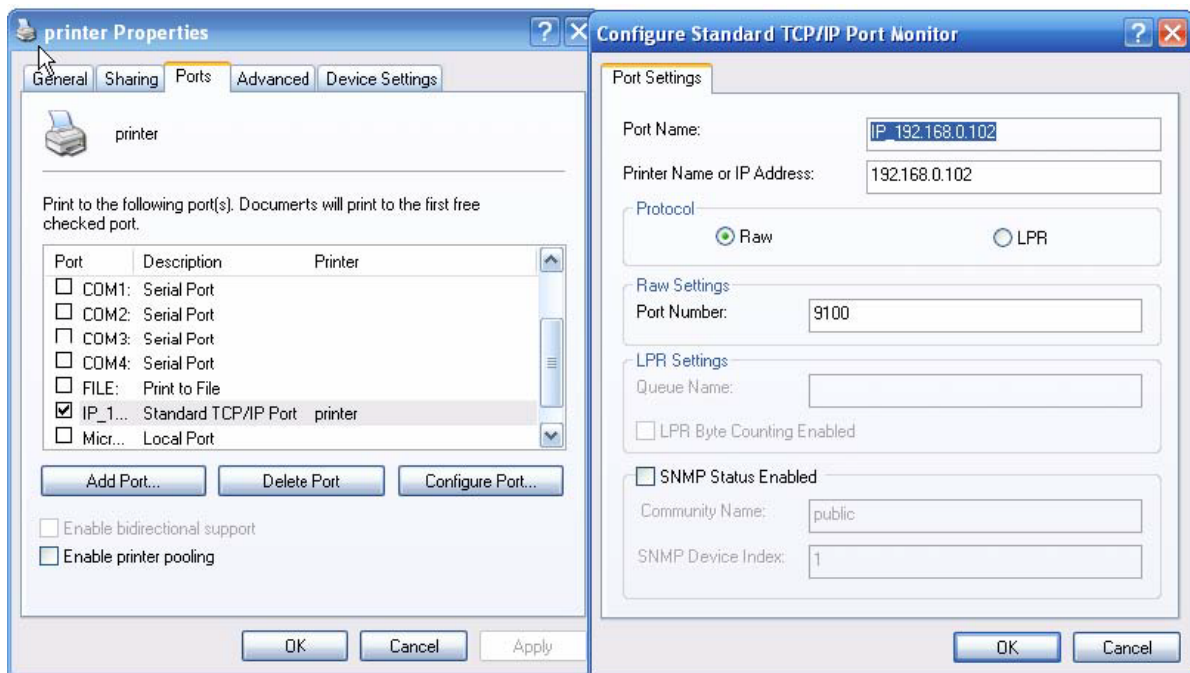
☐ Custom Settings...

< Back Next > Cancel



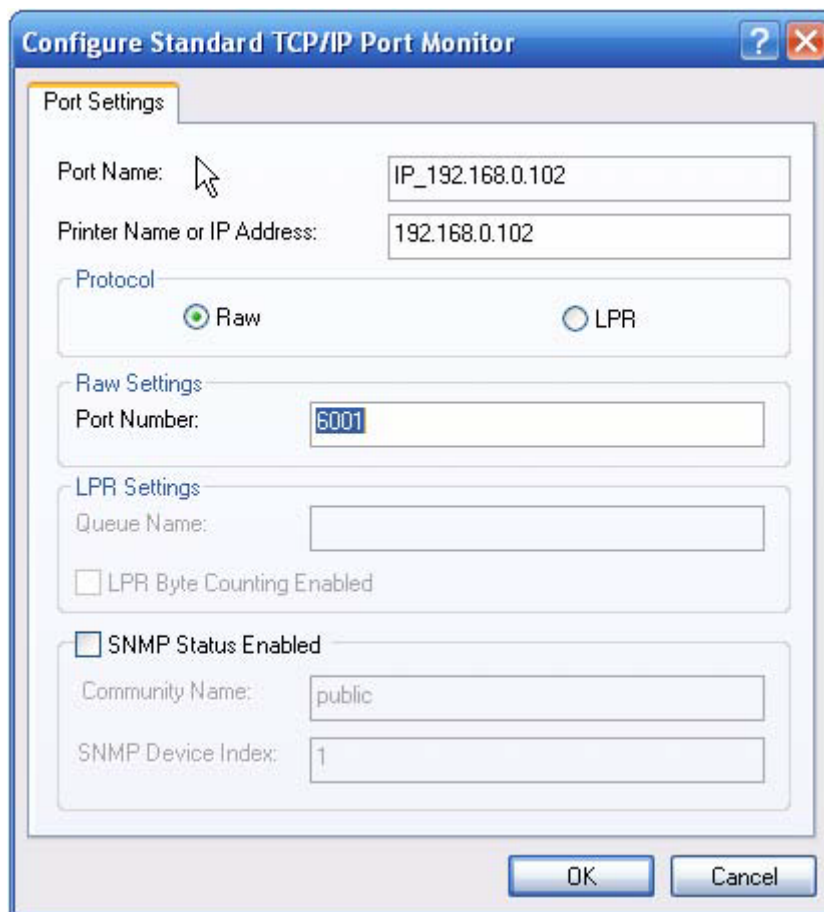
Network printer: IP 192.168.0.102, default port: 9100





The result of setting

Configure the standard TCP/IP Port

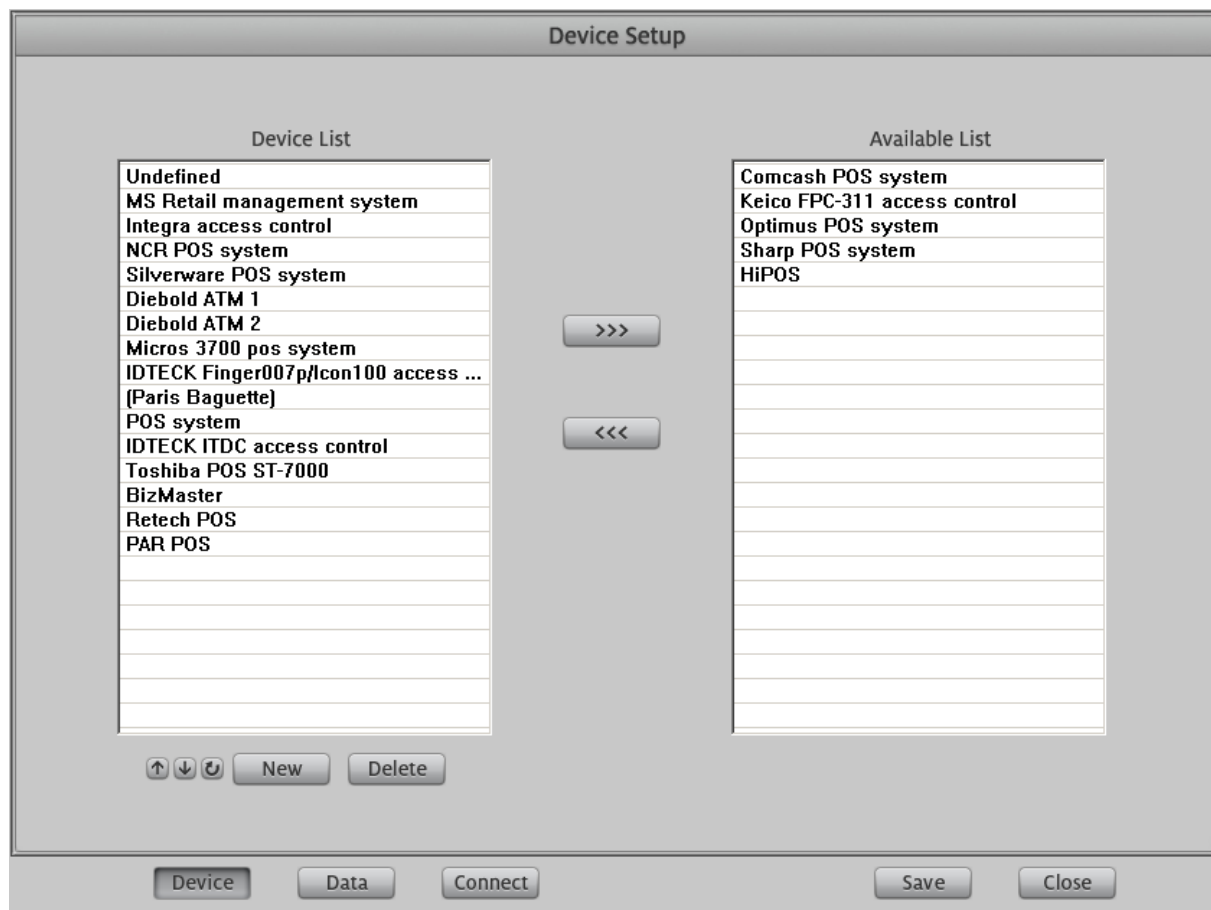


Change the default port 9100 to 6001

The port 6001 is the port for HVR to receive the information from POS. Or user can change the receive port of HVR to 9100, which is the same as the default network printer port.

2. POS Setup

Add/delete device



Open POS Setup interface and press Device button, user can add/delete device in the left list:

Press New button, system will add a device named "New Device", user can single-left-click to select it and again to change its name as you like.

After that, user can press the arrow in the middle to add them to the available list.

For more info please refer to HVR Server user manual.

Manufacturer: ILDVR DIGITAL TECHNOLOGY USA INC

Web site: www.ildvr.com

Tech-support: support@ildvr.com