



## Upgrading GV-IPCAM H.264 of firmware V1.06 or earlier to firmware V1.09 or later

**Article ID: GV15-12-06-13-t**

**Release Date: 06/29/2012**

### Applied

The issue applies to the following GV IP cameras with **firmware V1.06 or earlier**:

- Box Camera: GV- BX120D / 130D / 220D / 320D / 520D
- Bullet Camera: GV-BL120D / 130D / 220D / 320D
- Vandal Proof Dome: GV-VD120D / 220D / 320D
- Fixed Dome: GV-FD120D / 220D / 320D
- Mini Fixed Dome: GV-MFD120 / 130 / 220 / 320 / 520
- Fisheye Camera: GV-FE420 / 421 / 520 / 521
- Cube Camera: GV-CB120 / 220, CBW120 / 220

### Symptom

When upgrading GV IP cameras listed above with firmware V1.06 or earlier to firmware V1.09 or later, firmware upgrade cannot be completed successfully.

---

**Note:** When firmware upgrade is unsuccessful, rebooting the camera will restore the camera back to normal operation.

---

### Solution

To upgrade to firmware V1.09 or later, use GV-IP Device Utility V8.5.3 or later to **first upgrade the camera to firmware V1.08 and then upgrade again to the latest firmware version.**



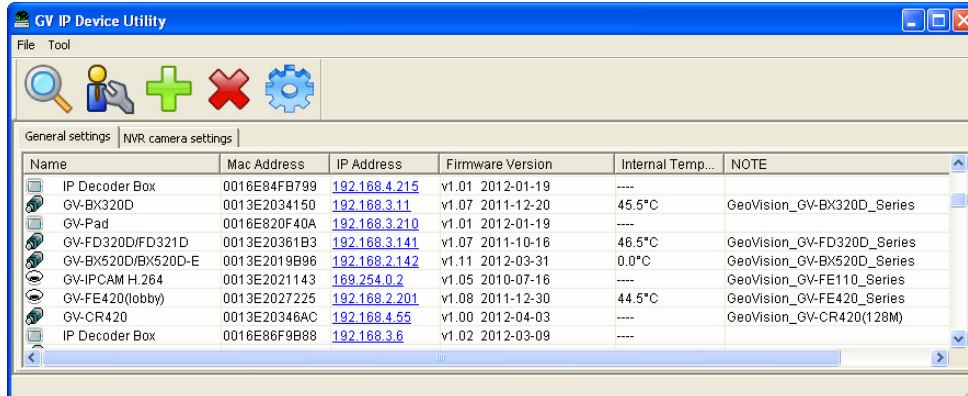
The latest GV-IP Device Utility and GV-IPCAM H.264 Firmware V1.08 / V1.09 or later are available for download at the links listed below:

| <b>Download Links</b>   |
|---|
| <p><b>GV-IP Device Utility (V8.5.3 or later)</b><br/><a href="http://www.geovision.com.tw/english/5_5.asp">http://www.geovision.com.tw/english/5_5.asp</a></p>  |
| <p><b>GV-IPCAM H.264 Firmware V1.08</b><br/><a href="http://ftp.geovision.tw/ftp/Neo/Firmware/Release_Version/GV-BX120_V108_111230_32M.zip">http://ftp.geovision.tw/ftp/Neo/Firmware/Release_Version/GV-BX120_V108_111230_32M.zip</a></p> <p>Use the download links above for the following models:</p> <ul style="list-style-type: none"><li>• Box Camera: GV-BX120D</li><li>• Bullet Camera: GV-BL120D</li><li>• Vandal Proof Dome: GV-VD120D</li><li>• Fixed Dome: GV-FD120D</li><li>• Mini Fixed Dome: GV-MFD120</li></ul> <p><a href="http://ftp.geovision.tw/ftp/Neo/Firmware/Release_Version/GV-BX220_V108_111230_32M.zip">http://ftp.geovision.tw/ftp/Neo/Firmware/Release_Version/GV-BX220_V108_111230_32M.zip</a></p> <p>Use the download links above for the following models:</p> <ul style="list-style-type: none"><li>• Box Camera: GV- BX130D / 220D / 320D / 520D</li><li>• Bullet Camera: GV-BL130D / 220D / 320D</li><li>• Vandal Proof Dome: GV-VD220D / 320D</li><li>• Fixed Dome: GV-FD220D / 320D</li><li>• Mini Fixed Dome: GV-MFD130 / 220 / 320 / 520</li><li>• Fisheye Camera: GV-FE420 / 421 / 520 / 521</li><li>• Cube Camera: GV-CB120 / 220, CBW120 / 220</li></ul> |
| <p><b>GV-IPCAM H.264 Firmware V1.09 or later</b><br/><a href="http://www.geovision.com.tw/english/5_3.asp">http://www.geovision.com.tw/english/5_3.asp</a></p>  |

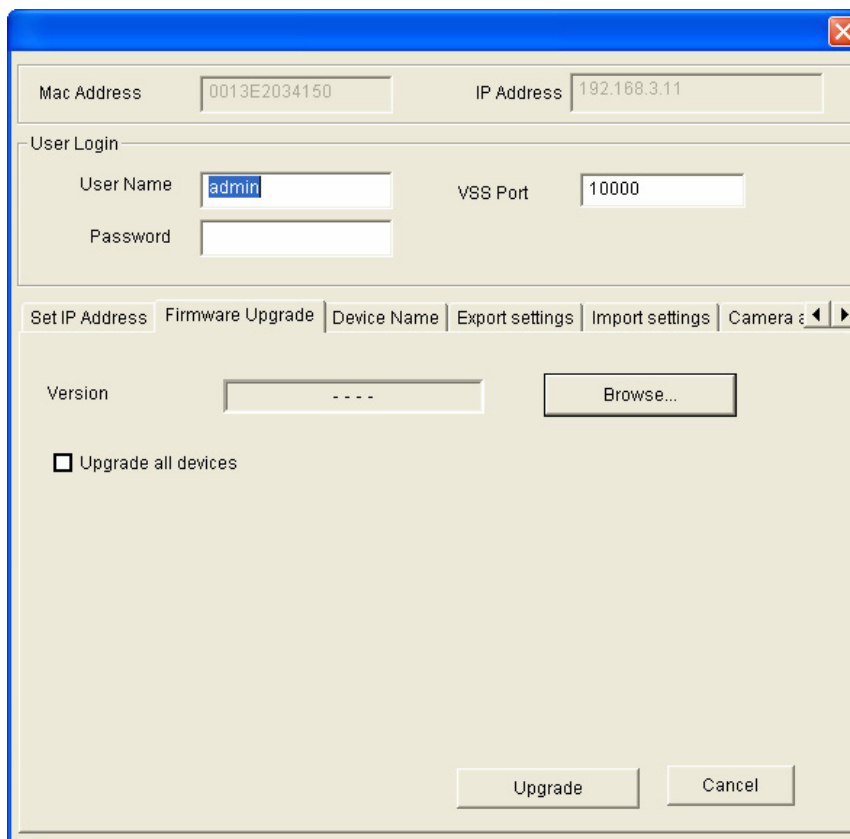


## Upgrading Firmware Using GV-IP Device Utility

1. Double-click the **GV-IP Device Utility** icon. The utility will automatically search for available IP devices.



2. Double-click a camera in the list and click the **Firmware Upgrade** tab.



3. Click the **Browse** button to locate the firmware file (.img) saved at your local computer.
4. To upgrade all cameras of the same model in the list, check **Upgrade all devices**.
5. Type the password, and click **Upgrade** to begin the upgrade.